







# Welcome to Florida's Statewide 511 Website

[Home](#) | [Traffic](#) | [My Florida 511](#) | [Construction Info](#) | [Emergency Info](#) | [Transit](#) | [Links](#) | [Help](#) | [Newsroom](#)

**ALERTS:** **Miami-Dade: On I-95 Southbound, from Miami Gardens Dr to SR 836, Express Lanes plastic poles are installed. Motorist are urged to use caution.**

[View All Alerts](#)

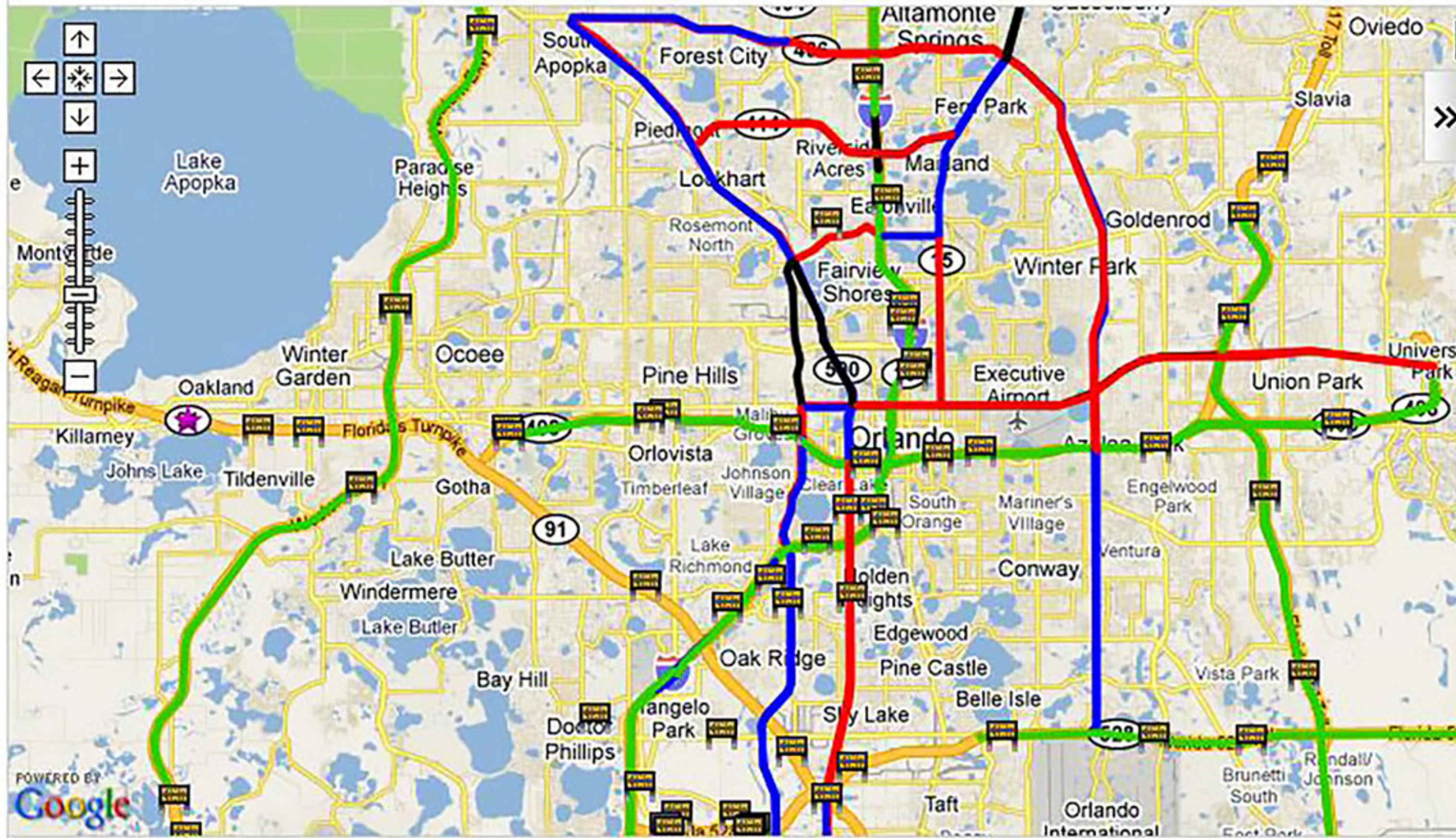
[Printer Friendly](#)

Welcome, **ltaher** - [User Home Page](#) | [Edit Profile](#) | [Logout](#)

[Español](#)

[Map](#) | [Incidents](#) | [Message Boards](#) | [Cameras](#) | [Estimated Travel Times](#) | [My Florida 511](#)

Select Zoom in by selecting from the left drop-down list or by double clicking on a region below on the map.



## Legend

☒ Traffic Speeds / Estimated Travel Times [Close](#)

- $\geq 50$  mph
- 30 - 49 mph
- $< 30$  mph
- Not Available

- Cameras
- Message Boards
- Incidents
- Construction
- Congestion
- Weather
- Other





# Welcome to Florida's Statewide 511 Website

[Home](#) | [Traffic](#) | [My Florida 511](#) | [Construction Info](#) | [Emergency Info](#) | [Transit](#) | [Links](#) | [Help](#) | [Newsroom](#)

**ALERTS:** **Central: NB Florida Turnpike is closed at Mile Marker 281 due to Emergency Road Work. Traffic is being diverted off at Mile Marker 272, State Road 50. Motorists are advised to avoid the area.**

[View All Alerts](#)

[Printer Friendly](#)

Welcome, **ltaher** - [User Home Page](#) | [Edit Profile](#) | [Logout](#)

[Español](#)

MapIncidentsMessage BoardsCamerasEstimated Travel TimesMy Florida 511

Select: CentralAll HighwaysEast

| Region ^ | Highway | Direction | Segment  | Distance (miles) | Estimated Travel Time (min) | Avg Speed (mph) |
|----------|---------|-----------|--|------------------|-----------------------------|-----------------|
| Central  | I-4     | East      | I-4 EB from Floridas Turnpike to SR-436        | 15               | 17                          | 53              |
| Central  | I-4     | East      | I-4 EB from Saint Johns River Bridge to I-95   | 28.1             | 25                          | 60+             |
| Central  | I-4     | East      | I-4 EB from SR-436 to Saint Johns River Bridge | 12               | 11                          | 60+             |
| Central  | I-4     | East      | I-4 EB from US-27 to Floridas Turnpike         | 22.2             | 22                          | 60+             |
| Central  | SR-408  | East      | SR-408 EB from Florida's Turnpike to I-4       | 9                | 9                           | 58              |
| Central  | SR-408  | East      | SR-408 EB from I-4 to SR-50                    | 13               | 14                          | 57              |
| Central  | SR-436  | East      | SR-436 EB from US-17/92 to SR-528              | 15.7             | 39                          | 24              |
| Central  | SR-436  | East      | SR-436 EB from US-441 to US-17/92              | 9.7              | 32                          | 18              |
| Central  | SR-50   | East      | SR-50 EB from Florida's Turnpike to I-4        | 1.9              | 4                           | 29              |
| Central  | SR-50   | East      | SR-50 EB from SR-408 to I-4                    | 1.9              | 4                           | 29              |
| Central  | SR-528  | East      | SR-528 EB from SR-417 to I-95                  | 22.4             | 20                          | 60+             |





\*511 is a  
free service  
of FDOT

# Welcome to Florida's Statewide 511 Website

[Home](#) | [Traffic](#) | [My Florida 511](#) | [Evacuation Info](#) | [Transit](#) | [Links](#) | [Help/FAQ](#) | [Newsroom](#)

**ALERTS:** 511 Traffic: I - 95 1 Right lanes closed on April 14th.

[View All Alerts](#)

[Printer Friendly](#)

Welcome geoff - [Edit My FLorida 511](#) - [Logout](#)

[Español](#)

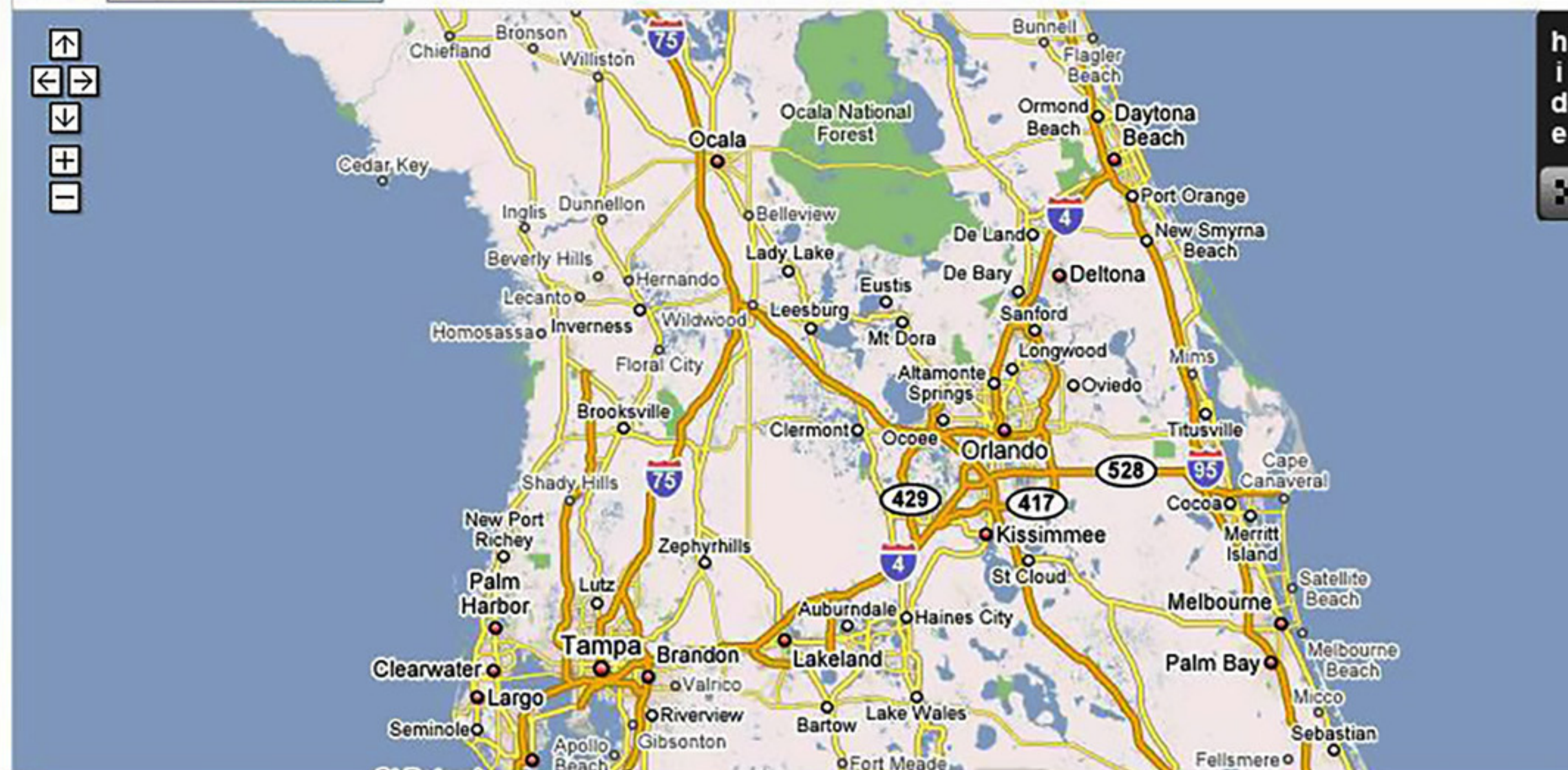
## 9:00PM EST 08/30/06 HURRICANE WARNING ISSUED FOR PARTS OF FLORIDA

AT 9:00PM EST THE GOVERNOR OF FLORIDA HAS EXTENDED THE HURRICANE WARNING NORTHWARD FROM MIAMI TO ORLANDO. A HURRICANE WARNING IS NOW IN EFFECT. A HURRICANE WARNING MEANS THAT HURRICANE CONDITIONS ARE EXPECTED WITHIN THE WARNING AREA WITHIN THE NEXT 24 HOURS. PREPARATIONS TO PROTECT LIFE AND PROPERTY SHOULD BE RUSHED TO COMPLETION.

**Map** | **Incidents** | **Message Boards** | **Cameras** | **Travel Times** | **My Florida 511**

Click on a Tab to access the information

Select: **Central Florida**



### Map Legend

☐ Traffic Speeds

#### Color Options

☒ >= 50 mph

☒ 30 - 49 mph

☒ < 30 mph

☐ Cameras

☐ Message Boards

#### Incidents

☐ Accident

☐ Construction

☐ Weather

☐ Travel Times

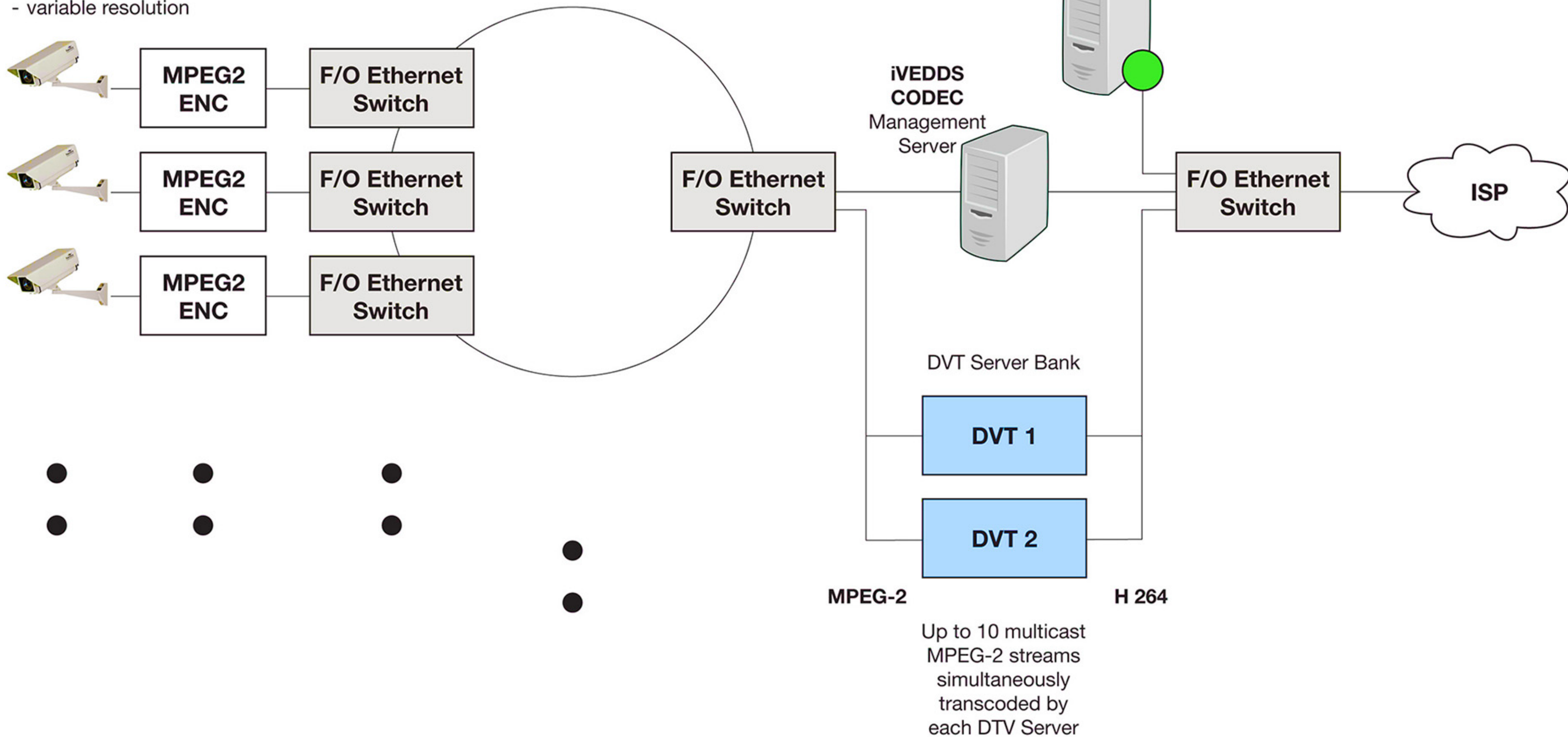
☐ My FLorida 511 Travel Times

Select Route



## MPEG-2

- single stream from each encoder, directed to multiple recipients
- variable resolution





CALL 511



TWITTER



FREE APPS



TEXT ALERTS



Statewide ▾

English ▾

Register

Login

Home

Traffic ▾

My Florida 511 ▾

Construction Info

Emergency Info

Transit / Airports

Links

Newsroom

Blvd due to roadwork through Thursday March 1, 2018. Motorists should expect delays and use caution in the area.

