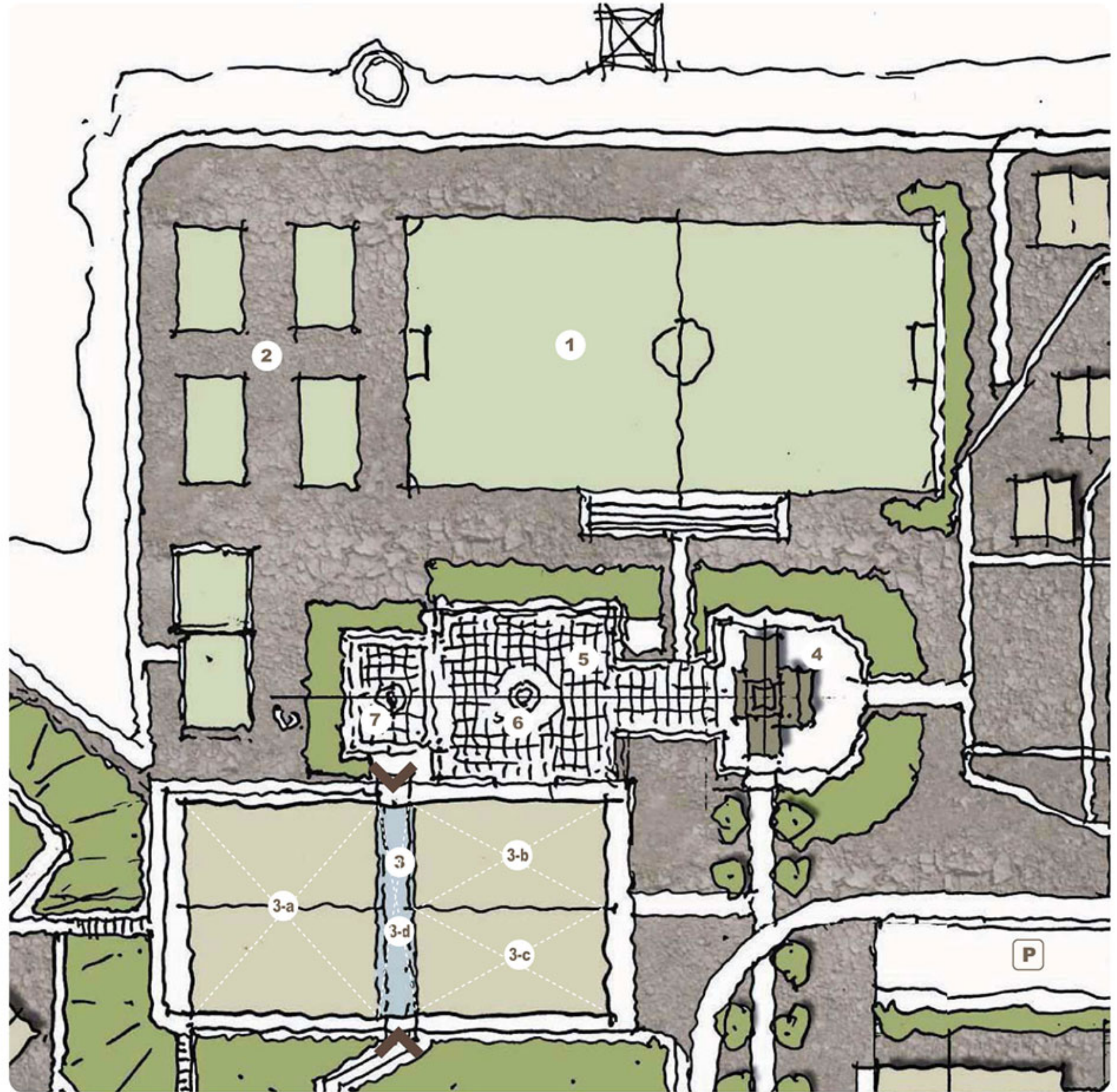






**Proposed Modification to Central Shared Area  
including Existing Multi-Purpose Recreation Center**

- 1 Football Field (Astroturf)
- 2 Basketball Courts
- 3 Multi-Purpose / Recreation Center
  - 3-a. Gymnasium / Fitness Center | Arcade
  - 3-b. Relocated Food Service & Retail
  - 3-c. Classrooms | Human Resource(HR)
  - 3-d. Entrance Corridor
- 4 Church
- 5 Main Urban Plaza
- 6 Water Fountain
- 7 Stone Garden w/ Fire Places+Huts
-  Entrance





**Housing**

**SAG (Salaried) / Expat Employees**

**Sermineros (Hourly) Employees**

**Contract Employees**

**370**  
SAG (Salaried) Employees  
+ Some Mixture Appropriate for Families

**20**  
Expat Employees

**1100**  
Sermineros (Hourly) Employees  
Limited Number of Visiting Family Units for Special Visits

**1500**  
Sermineros (Hourly) Employees



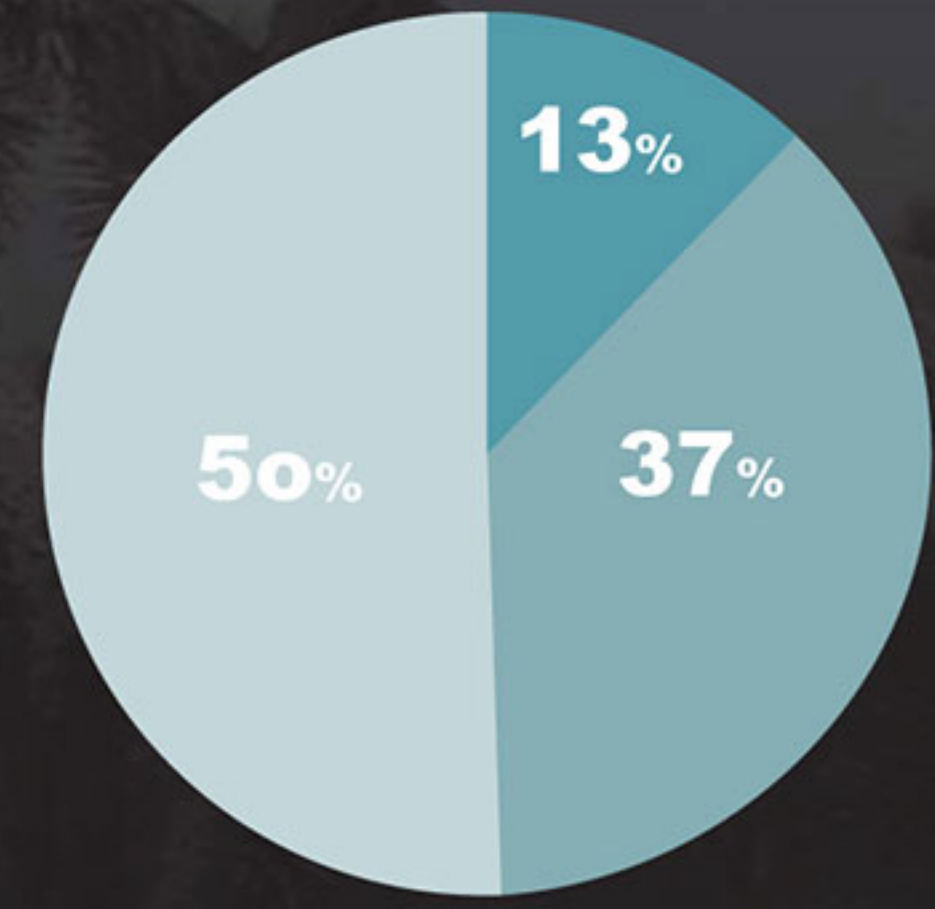
**Single Semi-Detached Apartment Hotel**  
2-Storey 1 around a shared common area



**Semi-Detached Apartment Hotel**  
2-Storey 1 around a shared common area



**Apartment Hotel**  
2-Storey 1 around a shared common area



**APIARIO**





**“Status Quo +” : Building upon the Existing Peñasquito Camp Model**

# Phase<sup>3</sup>

## Key Characteristics

Clear way finding, legibility of circulation, landscape, breakout space, shade, recreational areas, and color all contributing to a humanised long lasting environment for the duration of the mining operations.

- Erecting new prefab units to ensure maximum 100 people per dormitory and 8 people per 8-plex
- Landscape buffers & Open space for passive recreation
- Market building (Retail space) & Plaza
- Space for future expansion 500 beds in 5 dormitory units
- Consolidated food service & gym in the community center
- Creation of church and a main urban plaza (with water fountain, stone garden, and fireplace) as a central gathering space

- 1 Bus Pick-up & Drop off
- 2 New Miner Accommodation
- 3 Multi-Purpose/Flexible Space for Line-up & Indoor Group Activity and Open Space(Lawn) for Outdoor Group Activity
- 4 Storage Facility
- 5 New Accommodation for Future Expansion (500 People)
- 6 21 New Prefab 8-Plex Units  
Including New V.I.P, Women & Family Housing (21Units=168People)
- 7 Existing 8-Plex Units
- 8 Existing Units for 100 People

- G** Entry Gates w/security
- P** Parking Lot
- H** Helicopter Pad





**Site Location** Peñasquito is one of the largest new mines in the world and will be the primary driver for Goldcorp's growth for many years. At the end of 2009, Peñasquito's estimated mine life was 22 years at the rate of 500,000 oz of annual gold production. The project is located in the state of Zacatecas, Mexico at approximately 24°45' N latitude / 101°30' W longitude. Goldcorp owns 100% of the mineral rights to a large area covering approximately 39,000 hectares located in the northeastern portion of the State of Zacatecas in north-central Mexico. The portion of this area referred to as the Peñasquito mining camp lies approximately 27 km west of the town of Concepción del Oro in a wide, generally flat valley covered by coarse grasses and cacti.

