

WHAT'S NEW

Staten Island Hylan Blvd Bridges

Reconstruction resumes on the NB and SB **Hylan Boulevard Bridges**, which span the Staten Island Expressway between EB Narrows Road South and WB Narrows Road North. Seek alternate routes. One lane of traffic will be open to motorists in each direction on the bridges through the project. Pedestrian access will remain.

Preliminary deck repairs on the right half of both bridges begins **July 7th and lasts through July 10th**. Closure of the left half of each bridge begins **July 13th and lasts through early 2017**.

Major Deegan Expressway Reconstruction Project

Three NB travel lanes on the Major Deegan Expressway have been reduced to two travel lanes from Exit 3 (East 138th

TWITTER

my511NY @my511NY
Food and Fright Festival on South Washington St BOTHDIR b/w Clinton Ave and Main St (Bergen) all lanes closed and detoured until 9PM

my511NY @my511NY
Watermain break on #NJ35 SB approaching NJ Turnpike (Woodbridge Twp) all lanes closed for repairs 2 way traffic on NB roadway

Truck Restriction

Bridge ID	2259300
Carries	Cayuga Ave
Crosses	Kelsey Crk
Height Restrictions	Unlimited
Weight Restrictions	22
Last Updated	Mar 25 2015, 1:00 PM



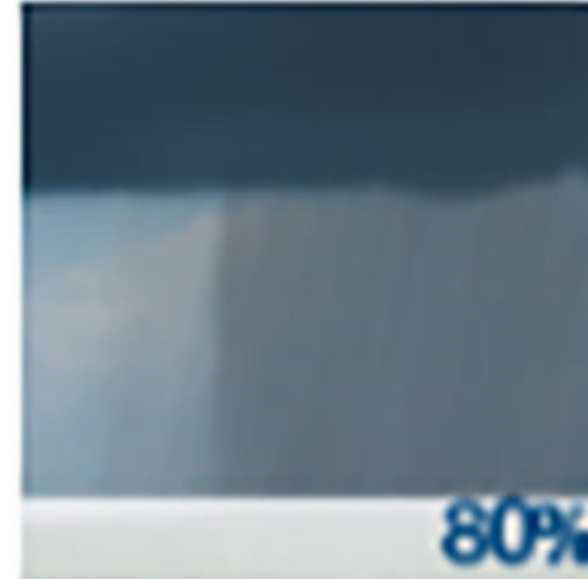


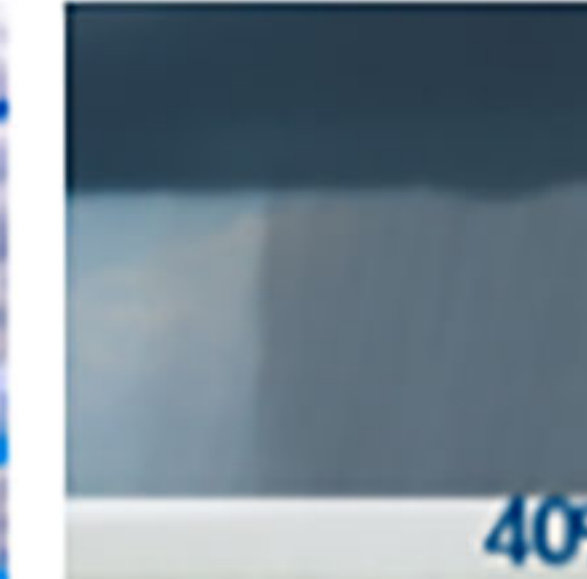
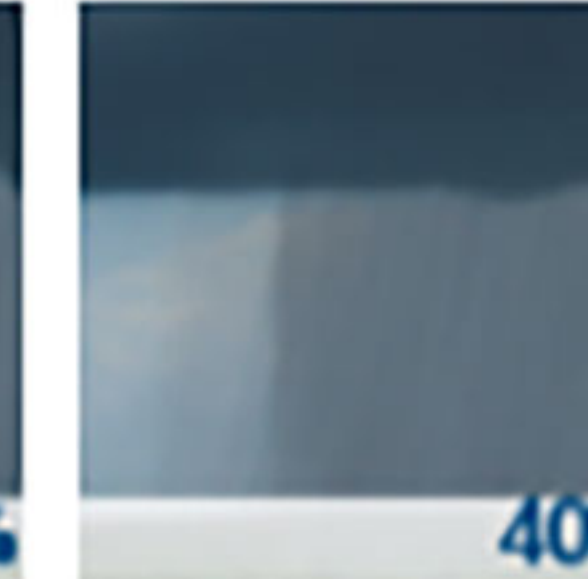


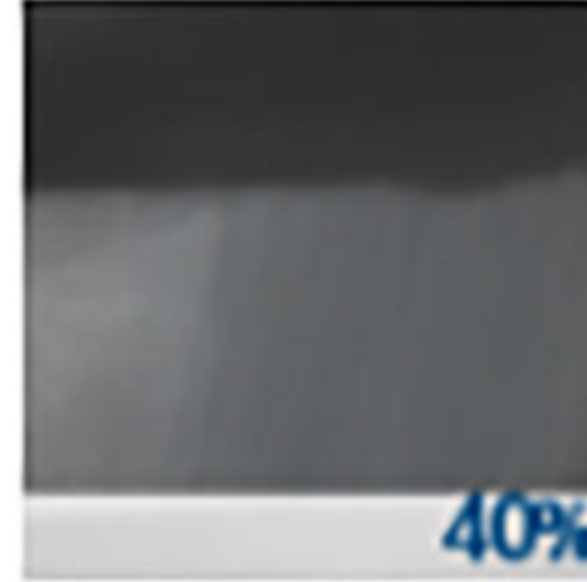
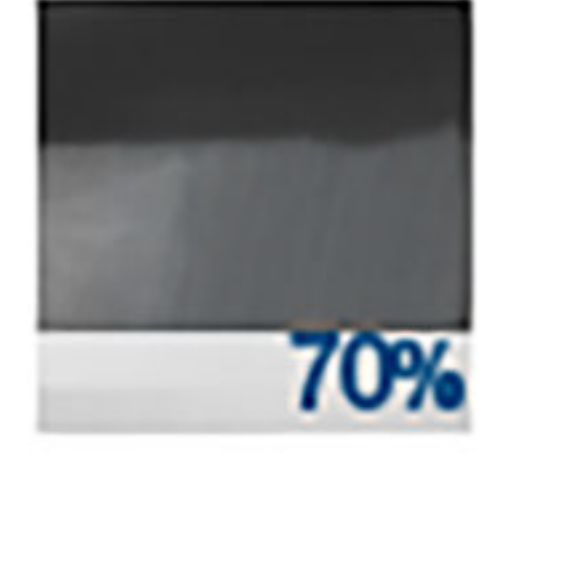

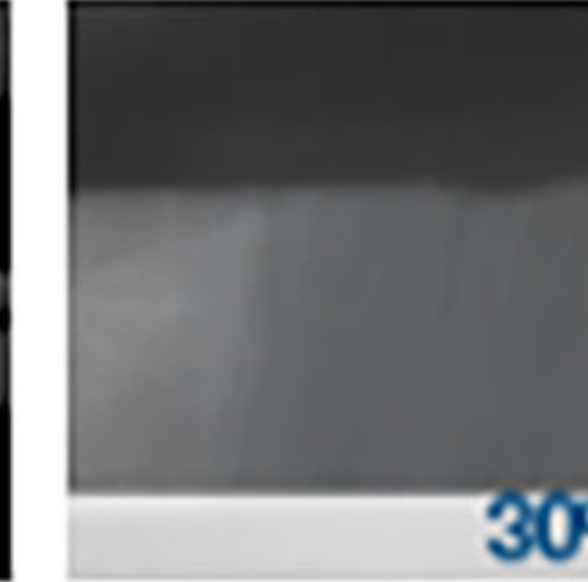
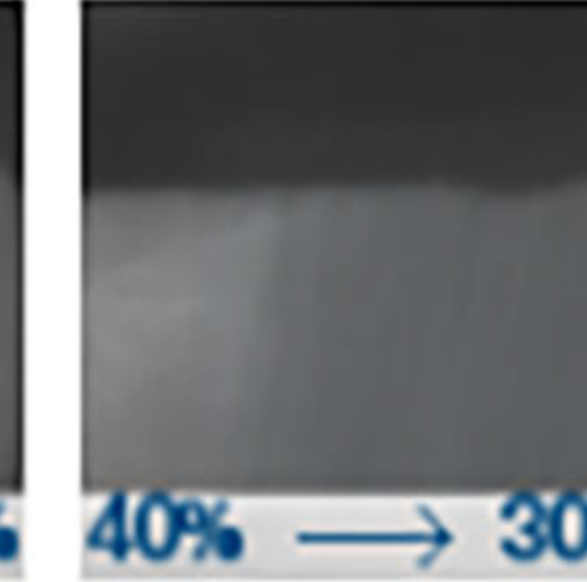
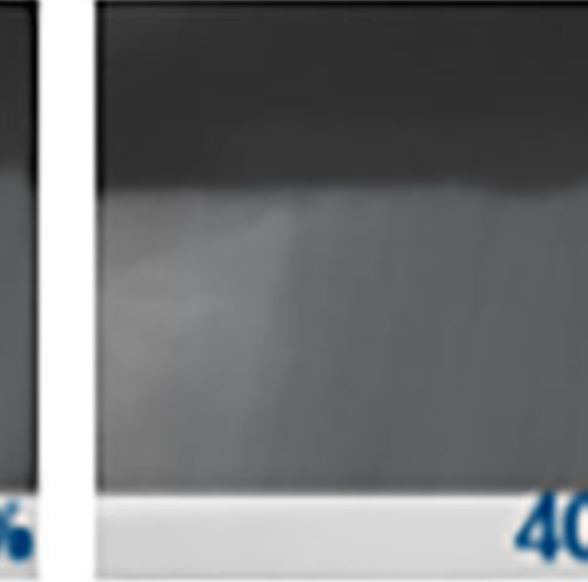
Map Legend

- Traffic Speeds
- Winter Road Conditions
- Incidents
 - Incident Closures
- Transit Incidents
- Construction
- Transit Construction
- General Information
- Park & Ride
- Closures
- Cameras
- Major Crossings
- Message Signs
- Weather Alerts
- Weather Forecasts
- Rest Areas
- Rest Areas Closed
- Truck Restrictions
- Special Events
- Transit

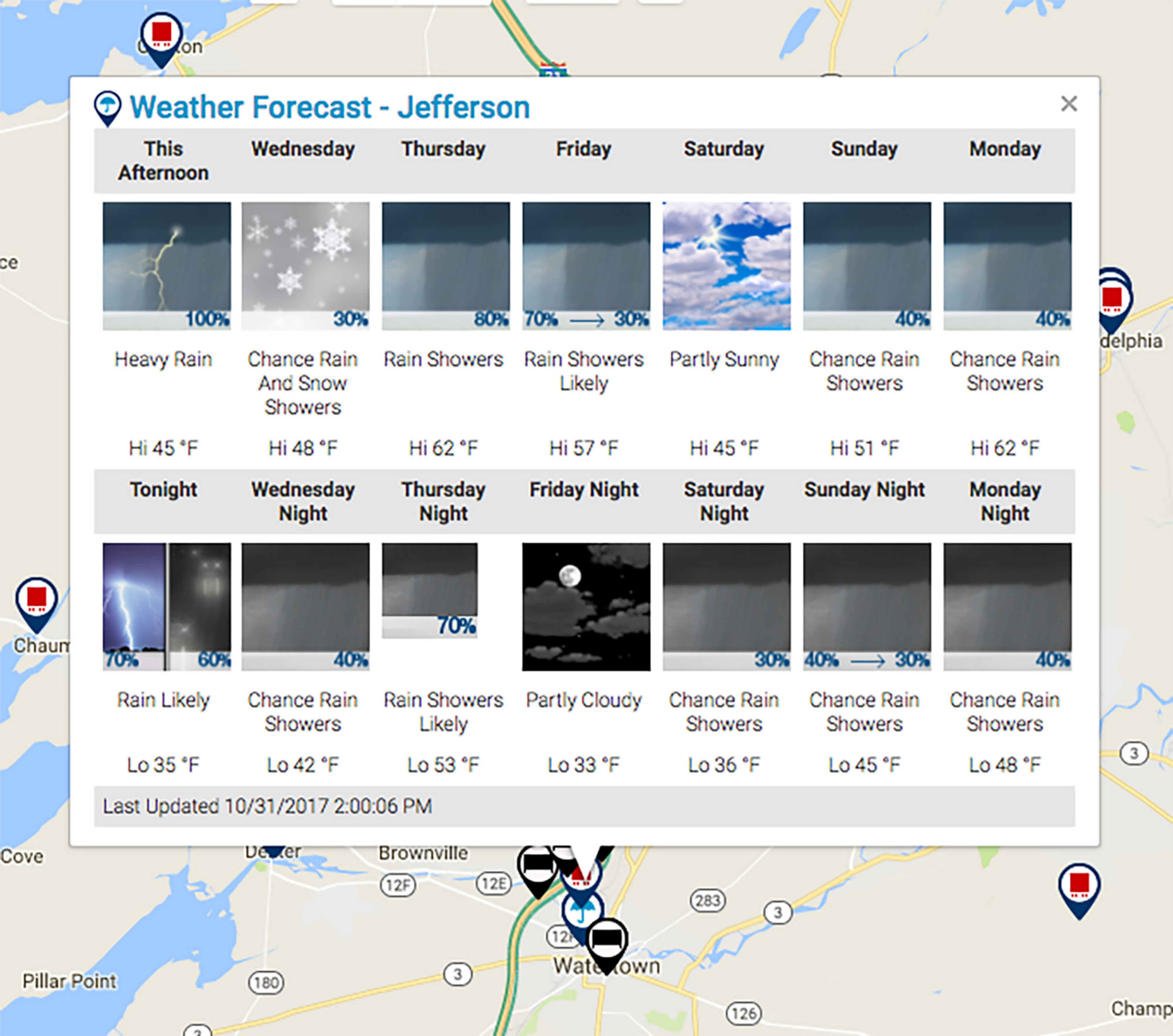


Weather Forecast - Jefferson



This Afternoon	Wednesday	Thursday	Friday	Saturday	Sunday	Monday	
 100%	 30%	 80%	 70% → 30%		 40%	 40%	
Heavy Rain	Chance Rain And Snow Showers	Rain Showers	Rain Showers Likely	Partly Sunny	Chance Rain Showers	Chance Rain Showers	
Hi 45 °F	Hi 48 °F	Hi 62 °F	Hi 57 °F	Hi 45 °F	Hi 51 °F	Hi 62 °F	
Tonight	Wednesday Night	Thursday Night	Friday Night	Saturday Night	Sunday Night	Monday Night	
 70%	 60%	 40%	 70%		 30%	 40% → 30%	 40%
Rain Likely	Chance Rain Showers	Chance Rain Showers	Rain Showers Likely	Partly Cloudy	Chance Rain Showers	Chance Rain Showers	Chance Rain Showers
Lo 35 °F	Lo 42 °F	Lo 53 °F	Lo 33 °F	Lo 36 °F	Lo 45 °F	Lo 48 °F	

Last Updated 10/31/2017 2:00:06 PM



MY ROUTES ALERTS NEWS

A Address

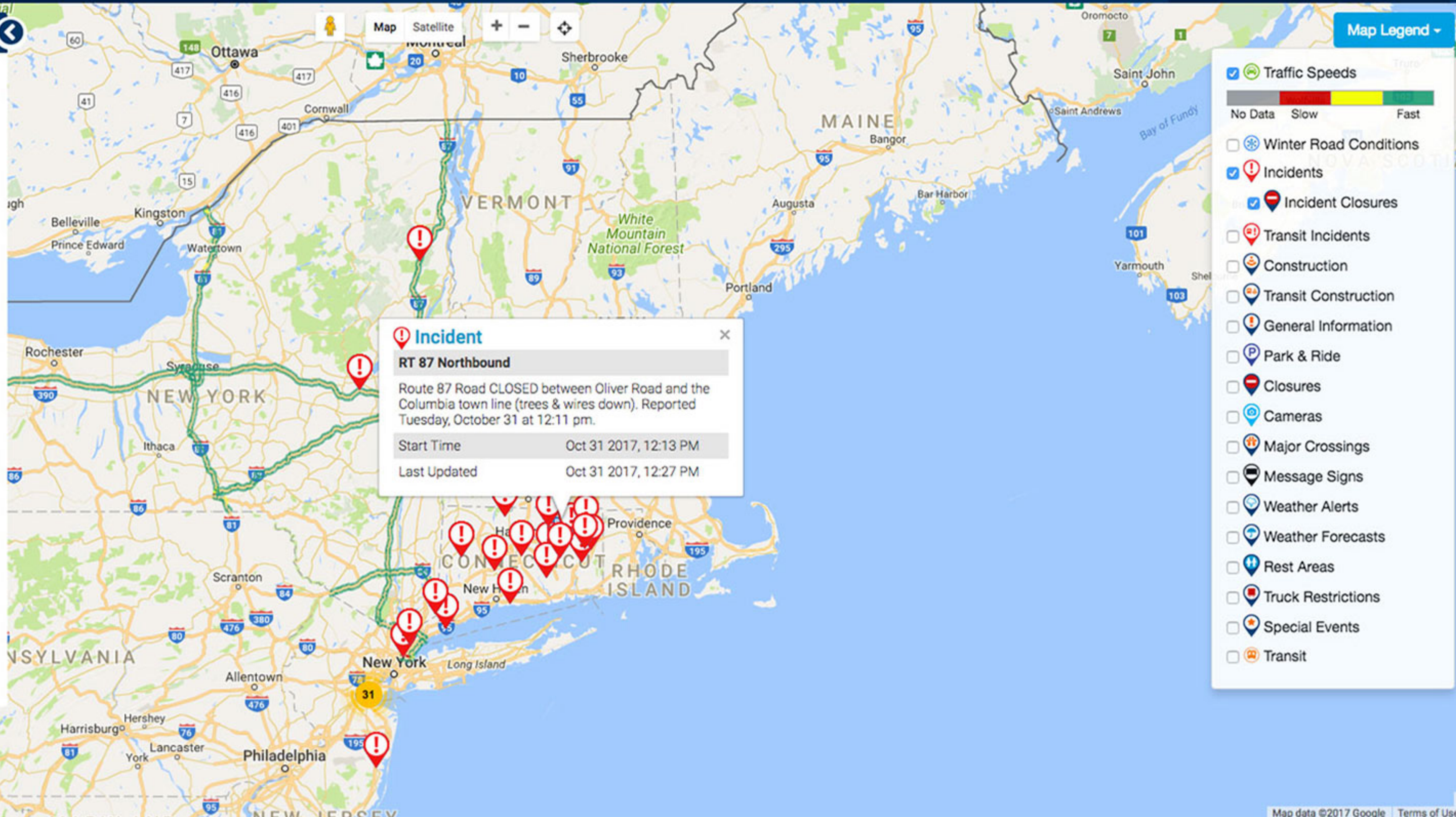
B Address

Drive Transit Drive + Transit Reset

MY CAMERAS

Please login to customize My Cameras.

I-590 North Off-Ramp at I-490

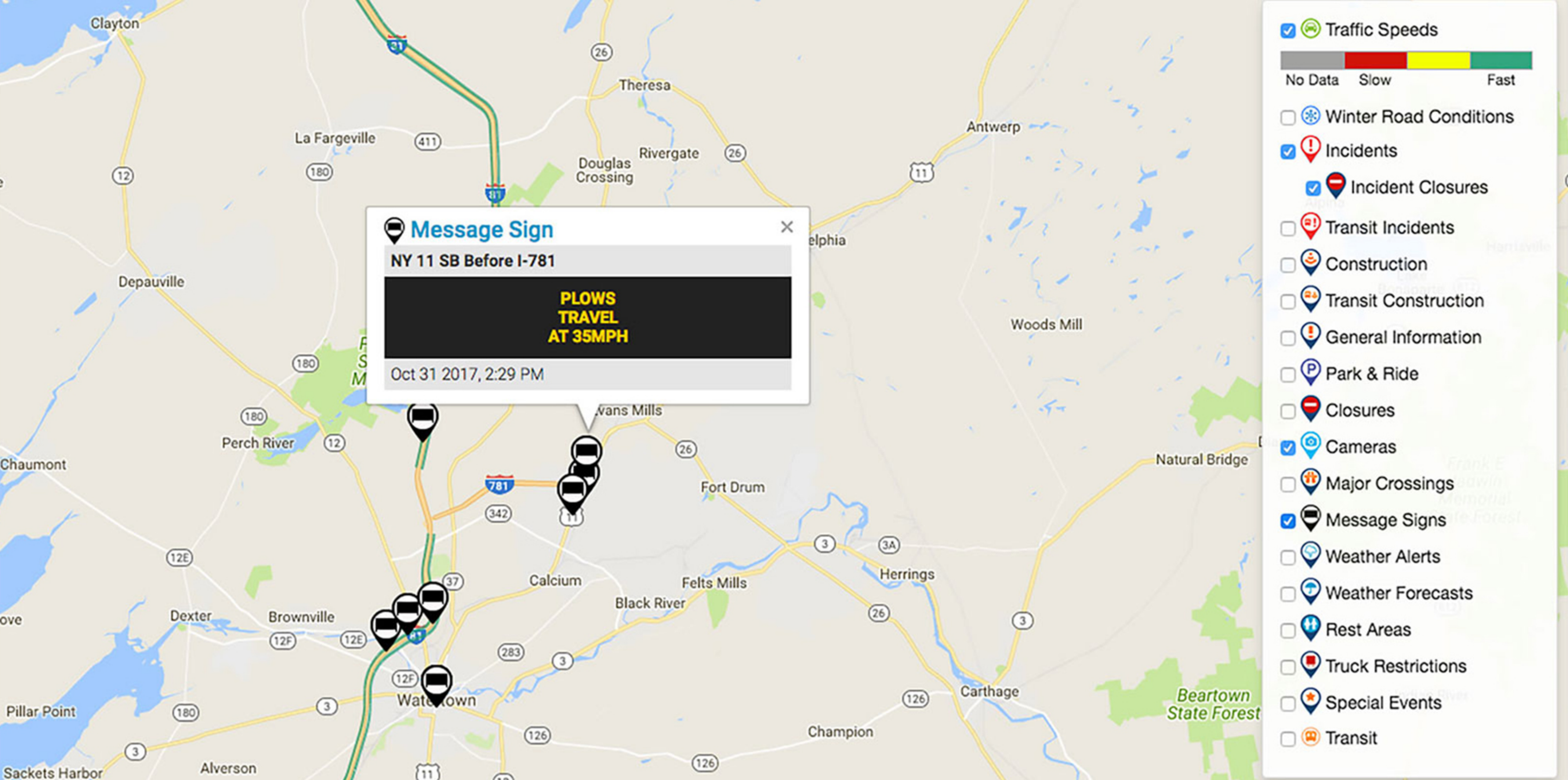


Incident

RT 87 Northbound

Route 87 Road CLOSED between Oliver Road and the Columbia town line (trees & wires down). Reported Tuesday, October 31 at 12:11 pm.

Start Time	Oct 31 2017, 12:13 PM
Last Updated	Oct 31 2017, 12:27 PM



Message Sign [Close]

NY 11 SB Before I-781

PLOWS TRAVEL AT 35MPH

Oct 31 2017, 2:29 PM

- Traffic Speeds
- Winter Road Conditions
- Incidents
 - Incident Closures
 - Transit Incidents
 - Construction
 - Transit Construction
 - General Information
 - Park & Ride
 - Closures
 - Cameras
 - Major Crossings
 - Message Signs
 - Weather Alerts
 - Weather Forecasts
 - Rest Areas
 - Truck Restrictions
 - Special Events
 - Transit



MY ROUTES **ALERTS** **NEWS**

A Antwerp, NY, United States

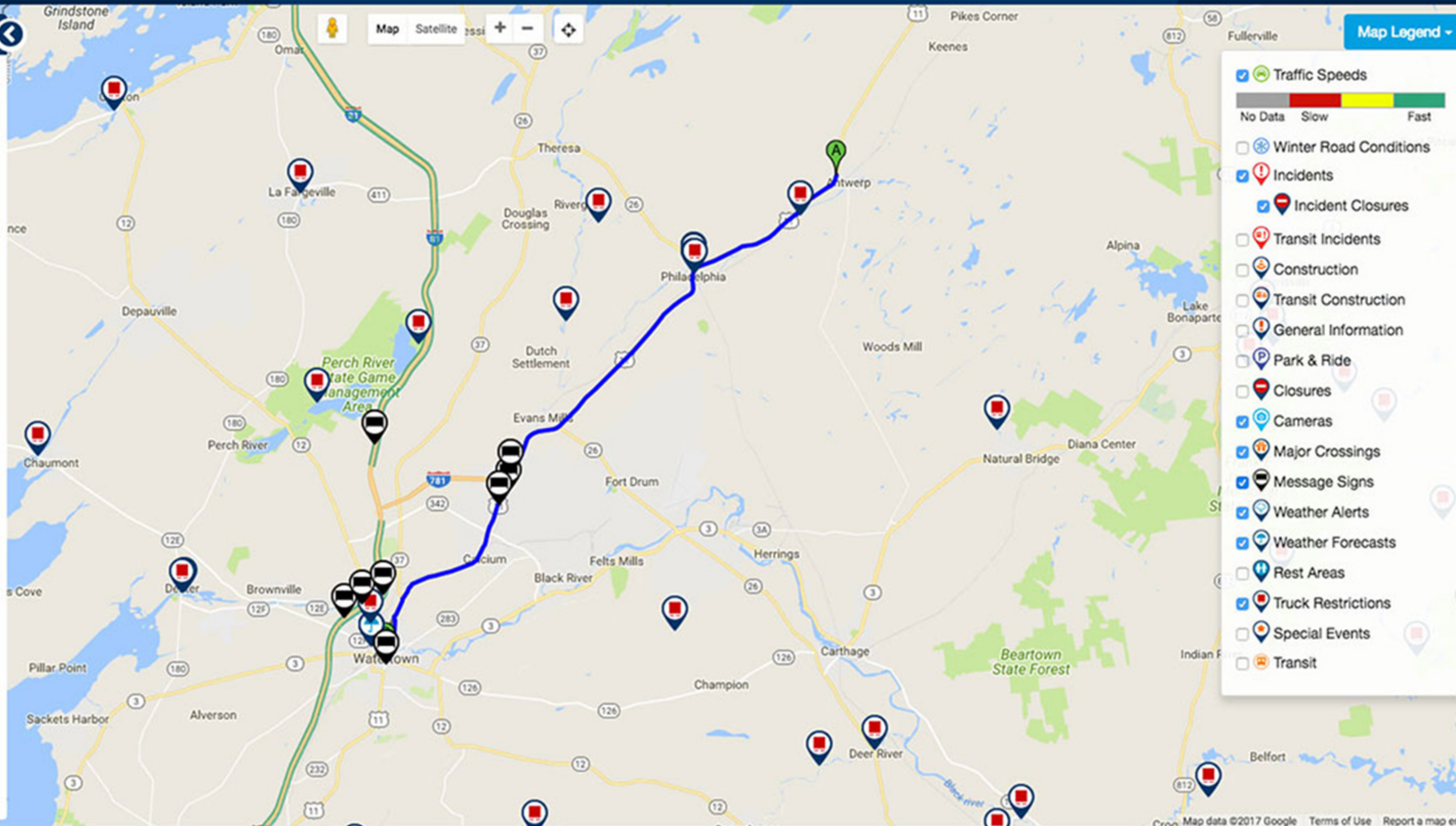
B Watertown, NY, United States

Drive Transit Drive + Transit Reset Settings

Route 1 33 min **Route 2 35 min**

Total Time: 33 min
Total Travel Distance: 23.6 miles

From N Main St Southbound to Us-11 Westbound	1 min (0.7 miles)
From Us-11 Westbound to Main St Westbound	6 min (5.2 miles)
From Main St Westbound to Us-11 Westbound	1 min (1.0 miles)
From Us-11 Westbound to Mill St Southbound	20 min (15.0 miles)
From Mill St Southbound to Public Sq Westbound	4 min (1.3 miles)
From Public Sq Westbound to Court St Westbound	1 min (0.1 miles)
From Court St Westbound to Washington St Southbound	1 min (0.1 miles)
From Washington St Southbound to Stone St Westbound	



MY ROUTES ALERTS NEWS

A Antwerp, NY, United States

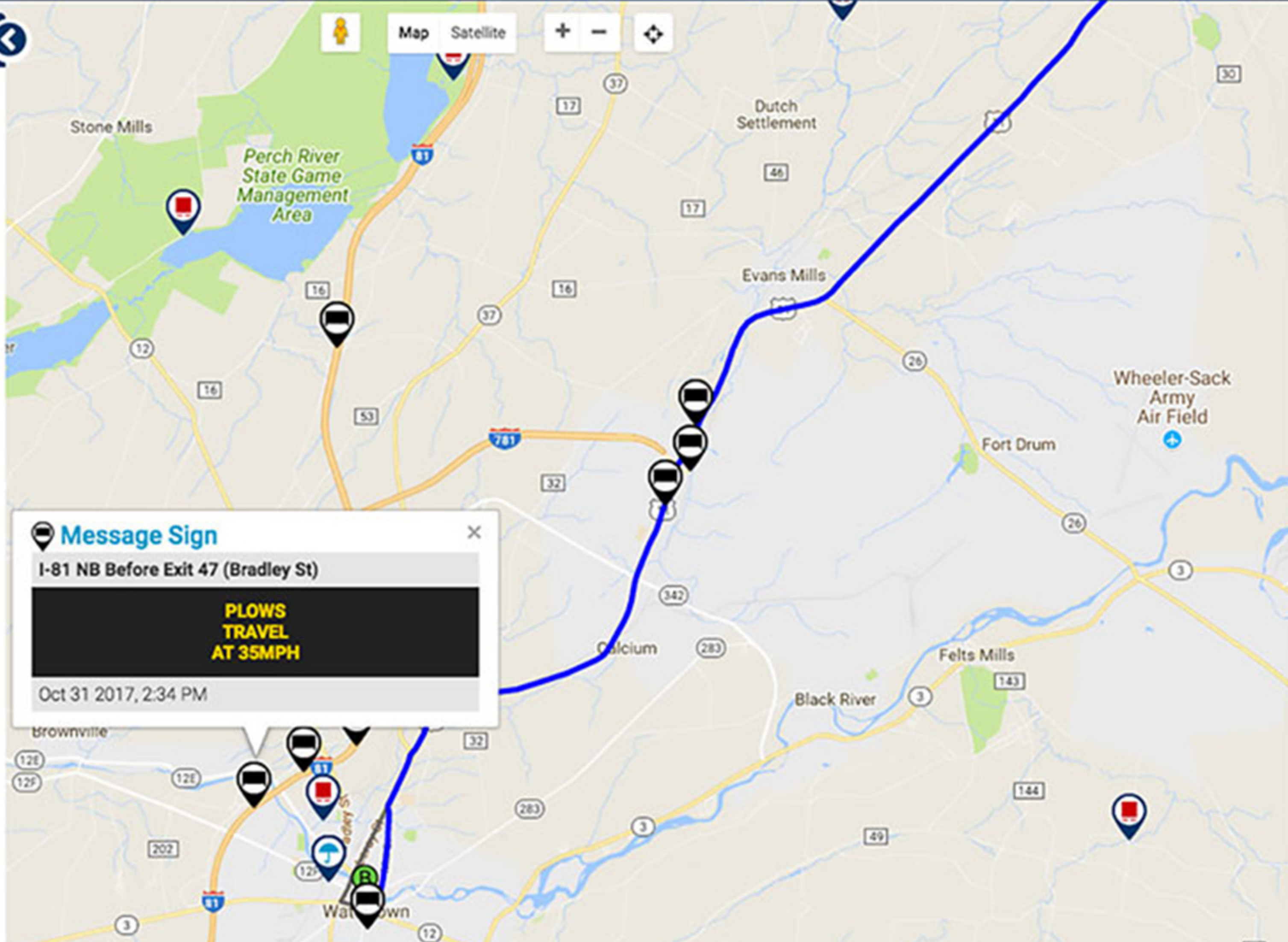
B Watertown, NY, United States

Drive Transit Drive + Transit Reset

Route 1 33 min Route 2 35 min

Total Time: 33 min
Total Travel Distance: 23.6 miles

- From N Main St Southbound to Us-11 Westbound
1 min (0.7 miles)
- From Us-11 Westbound to Main St Westbound
6 min (5.2 miles)
- From Main St Westbound to Us-11 Westbound
1 min (1.0 miles)
- From Us-11 Westbound to Mill St Southbound
20 min (15.0 miles)
- From Mill St Southbound to Public Sq Westbound
4 min (1.3 miles)
- From Public Sq Westbound to Court St Westbound
1 min (0.1 miles)



Map Legend

- Traffic Speeds
- Winter Road Conditions
- Incidents
 - Incident Closures
- Transit Incidents
- Construction
 - Transit Construction
- General Information
- Park & Ride
- Closures
- Cameras
- Major Crossings
- Message Signs
- Weather Alerts
- Weather Forecasts
- Rest Areas
 - Rest Areas Closed
- Truck Restrictions
- Special Events
- Transit

Message Sign

I-81 NB Before Exit 47 (Bradley St)

PLOWS TRAVEL AT 35MPH

Oct 31 2017, 2:34 PM