

Sign Management
 Group By Location

 Sign

 25EB-TTS-0.7: Rte. 25 Eastbound (2 Displays)

 Bourne Br
10 Miles **9**
 Sagamore Br VIA EXIT 3
13 Miles **15**
 25EB-TTS-7.2: Rte. 25 Eastbound (3 Displays)

 Otis Rotary
8 Miles

 151
11 Miles

 Falmouth
15 Miles

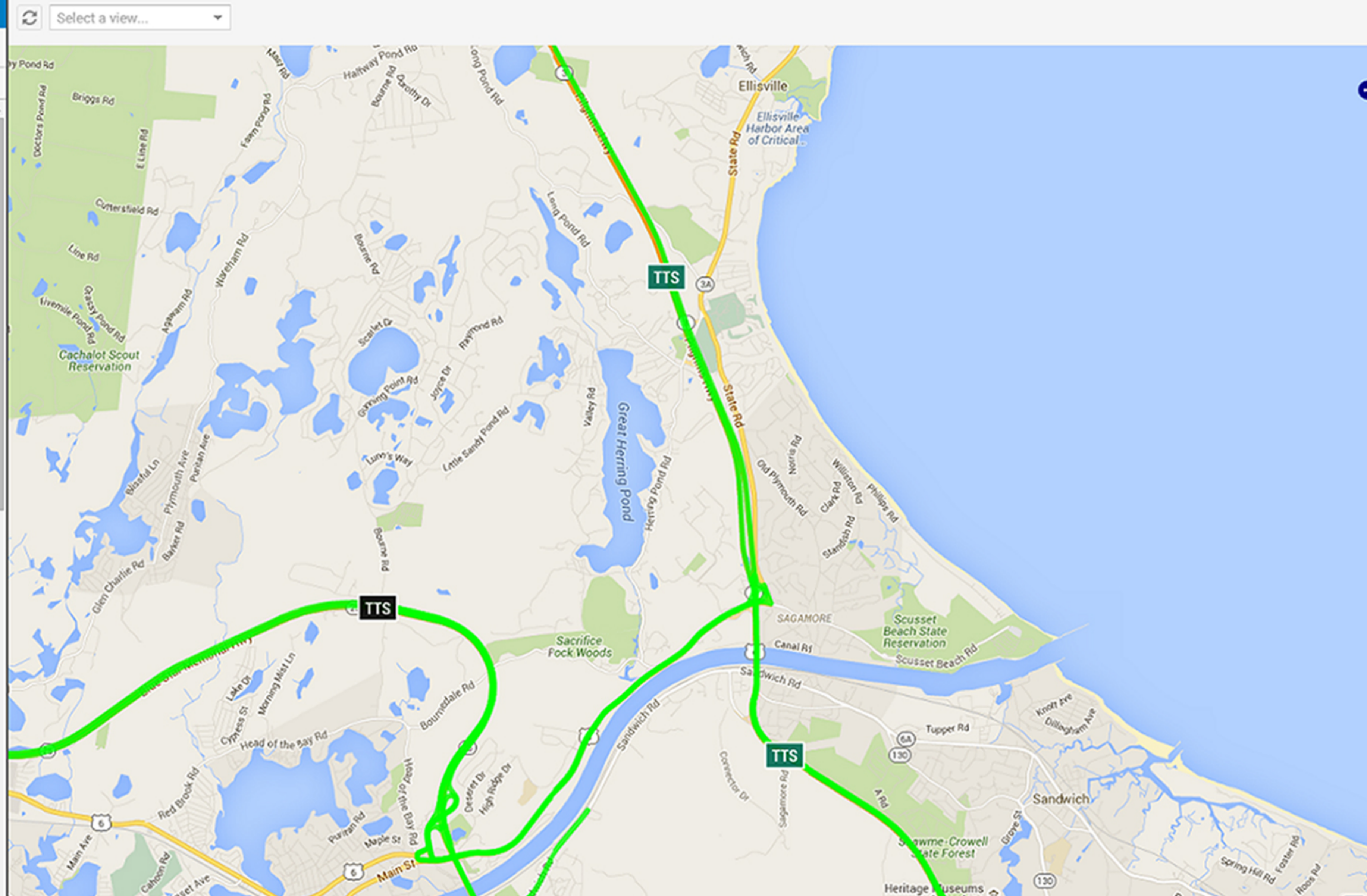
 28NB-TTS-57.9: Rte. 28 Northbound (3 Displays)

 Bourne Br
5 Miles

 3 VIA 6
10 Miles

 495 VIA 25
15 Miles

 3SB-TTS-3: Rte. 3 Southbound (2 Displays)

 Sagamore BR
3 Miles **3**
 Bourne Br VIA 6 WEST
8 Miles **10**
 6EB-TTS-55.8: Rte. 6 Eastbound (3 Displays)

Details

 Roadway: Rte. 3
 Direction: Southbound

**Sagamore BR
3 Miles **3****

 Sign ID: 3SB-TTS-3-A
 Description: Rt. 3 SB near Hedges Pond
 Route: Cape Cod - 3A - 2042 to 17
 Status:
 Enabled: True
 Communicating: True
 Travel Time Mode: Enabled
 Date Posted: 12/11 05:17 AM