



# Learning Environments After COVID-19 Lockdown Implementation Strategies and Planning

By Learning+ Team

**COVID-19 has affected educational systems worldwide. What will happen next is hard to define, but examining the challenges and reimagining how to deliver a safe, adaptive and engaging learning experience can be done.**

## WHAT SHOULD BE CONSIDERED AS AREAS OF CONCERN?

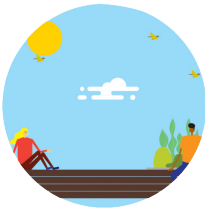


### Well Being of Students, Staff and Community

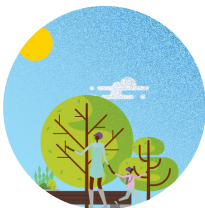
There is great anxiety in today's "new normal." While facilitating learning, we need to address the holistic approach to student and teacher development.



### Instructional Spaces



### Nutrition



### HVAC and Indoor Environment



### Music, Physical Education (PE), Athletics, CTE, Extracurriculars



### Access



### Operations

- + Implement touchless utilities, i.e., restroom fixtures, sinks, high traffic doors, light switches, etc.
- + Cost of switching to touchless hand sanitizer dispensers.
- + Cleaning protocols and scheduling.



### Transportation

- + Getting to and from school.
- + The impact of social distancing on bus loading.
- + Traffic issues due to increase in parent drop-offs.

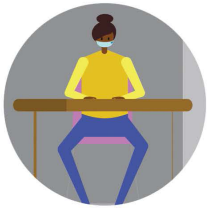


### After School Programs and Supplemental Services

- + Higher incidence of public interaction.
- + Thoughtful planning of the transition from the school environment to after school programs.
- + Achieving appropriate social distancing; possible increase in supervision.

# Preliminary After COVID-19 Classroom Planning

## Social Distancing in a Classroom—How it Will Work



### Instructional Spaces

Current classroom configurations are typically designed for 20-30 students based on an allowance influenced by the instructional delivery model in the range of 30-36 SF per student. This same area with an implemented 2M or 6' social distancing rule requires additional space that can be four (4) times the amount per student which limits student capacity to approximately 25% of the original design. If various forms of physical barriers are installed, the existing space capacity could be increased closer to 50% with a potentially high cost. Either scenario requires additional options for delivery of instruction for the original designed student capacity in an existing facility. Using the assumption that large gathering and collaboration spaces will not be utilized in the near term for their intended purpose, spaces such as cafeterias, gymnasiums and LGI's could likely be utilized to provide supplementary teaching environments that allow more capacity for in-person instruction; however, there would need to be an increase in the number of instructional staff members to cover the additional student cohorts displaced to these locations.



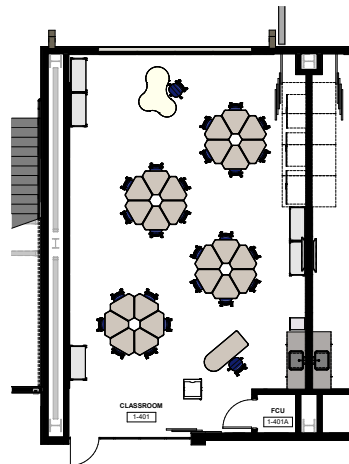
2M or 6'



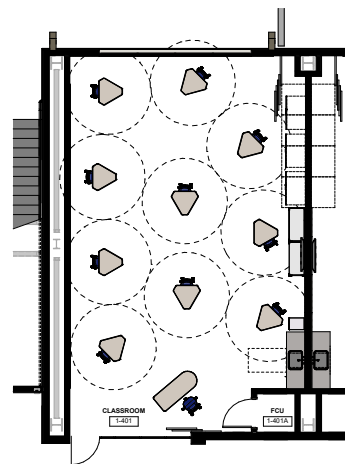
Pre COVID-19 Classroom



Post COVID-19 Classroom



Starting capacity of the classroom = 27 (as designed)  
School capacity = 750



Capacity of the classroom = 9-10 with physical distancing  
30% of capacity = 250

**Up next: related strategies that address these issues through short vs. long-term solutions and what is the impact on associated costs.**