

CENTRAL BUSINESS DISTRICT

Transform the city's geographic centre into a vibrant, **multi-modal mixed-use district** that supports **increased densities**, **balance of live and work** opportunities, and **placemaking** opportunities within close proximity to upgraded transit facilities.

JANPATH GOVERNMENT HOUSING REDEVELOPMENT PROJECT

30 Acres of two row housing in Unit 1, 2 & 3 redeveloped for high density residential developments.


11,650
EMPLOYMENT


8,775
POPULATION


3800
DWELLING UNITS


4.7 Lakh Sq.ft
OFFICE SPACE


500 ECS
PARKING SPACE

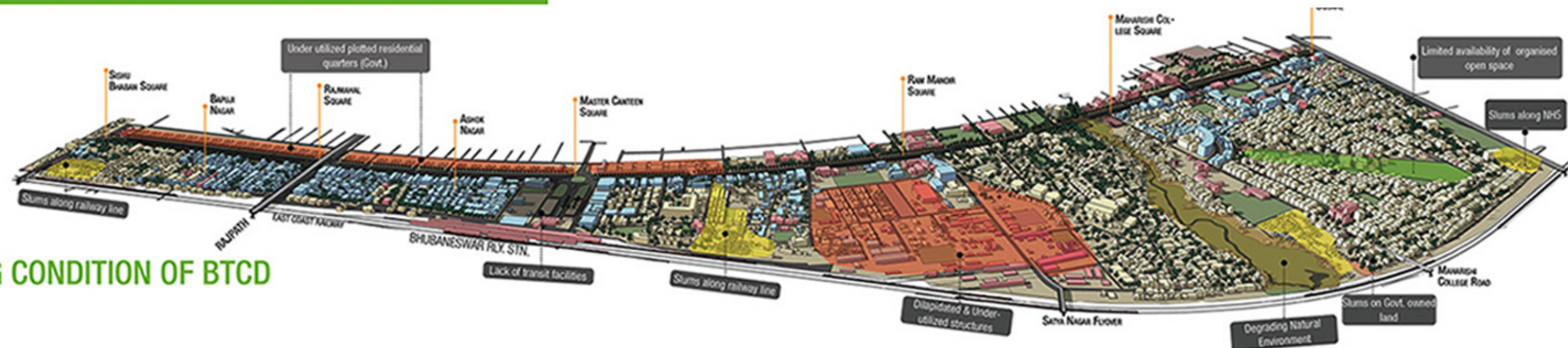

10.8 Lakh Sq.ft
RETAIL SPACE

KEY COMPONENTS

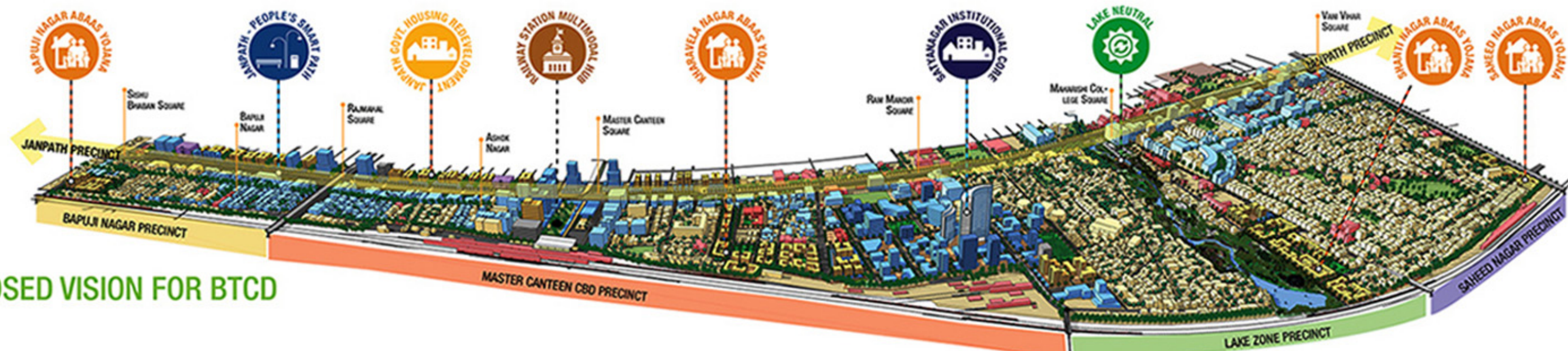
2 Hospitals |
Mixed Use | Differential
FARs | Walkability | Water
Recycling | Compact
Urban Form | Mixed-use
Multilevel Car Parking



EXISTING CONDITION OF BTCD



PROPOSED VISION FOR BTCD



RAILWAY STATION MULTIMODAL HUB

12-acres Redevelopment Project as BBSR's first smart public building and TOD mixed-use project including Railway Station terminal building redevelopment. NBCC will take up the project. It is expected that project will generate cash inflow into CIDF for more than Rs. 200 Cr. on basis of land value capture.

SATYANAGAR INSTITUTIONAL CORE

Redevelopment of 40-acres of underutilized public land into an institutional space promoting commerce, business, and education hub (internationally certified courses offered by educational institutions, and multi-skill centre). Private Investments shall be pro-actively promoted. Central Plaza in the area

LAKE NEUTRAL- ECOLOGICAL & WATER CYCLE RESTORATION

30-acre project, as a fulcrum for integrated water management through rainwater harvesting, productive landscaping and green infrastructure. To be developed as Eco-tourism project having Net Zero as the guiding principle.

JANPATH - PEOPLE'S SMART PATH

The area's 5-km long priority transit corridor, will be the first roadway that will undergo a redesign of the existing 60m RoW into a pedestrian friendly roadway. This will be achieved through road diets, no parking zones, mid-block crosswalks every 250m, shade trees/ arcades, street furniture, designated multi-use vending zones & active retail frontage. The costing is for civil works and ICT components.

JANPATH GOVT. HOUSING REDEVELOPMENT PROJECT

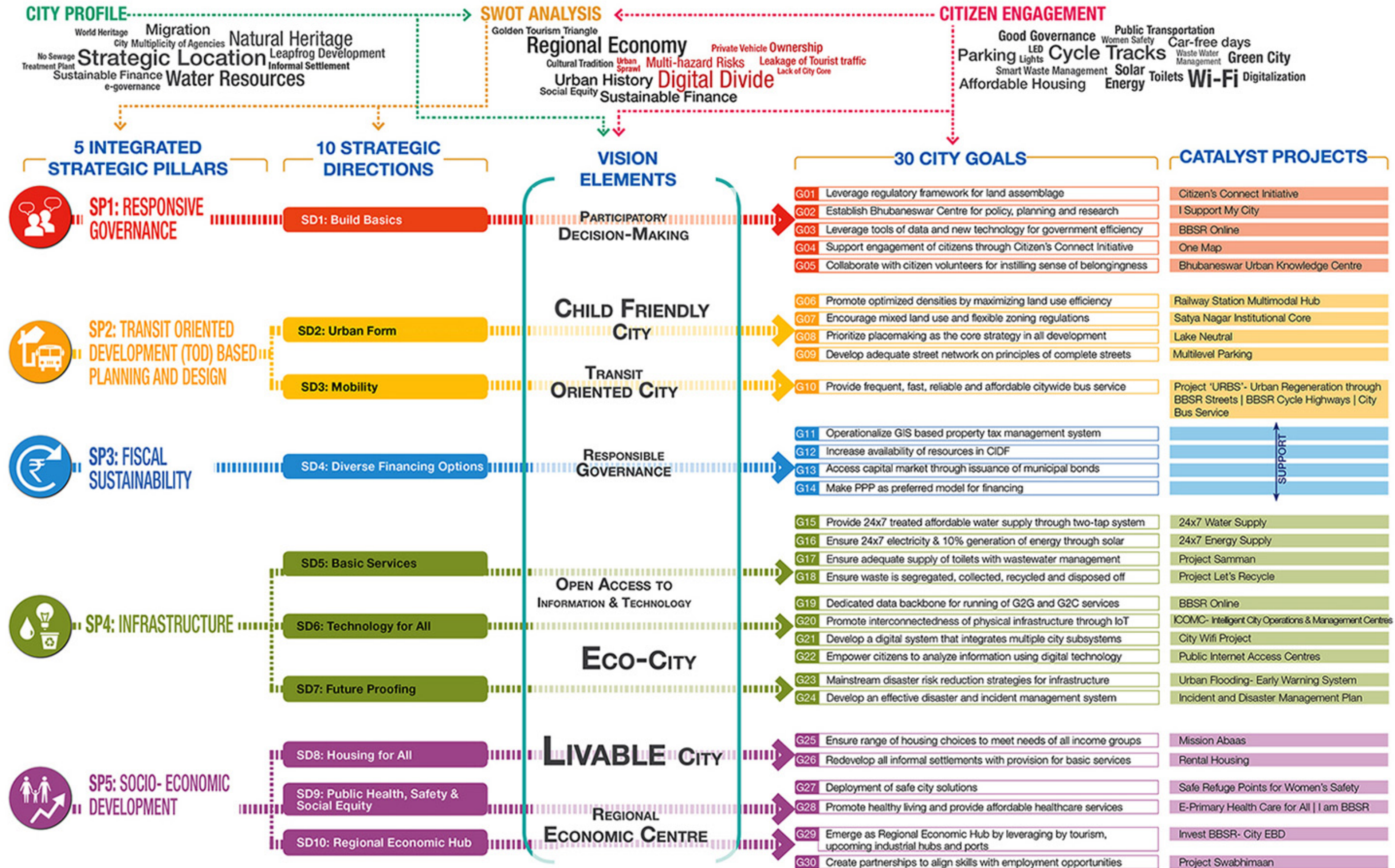
Redevelopment Projects to provide 3800 houses with an average 1000 sq. ft. carpet area and 1600 sq. ft. saleable area. Houses to be created on 30 acres of government land. Government to get its share of houses as per project structure.

MISSION ABAAS

4 Slum Redevelopment Projects - Bapuji Nagar Abaas Yojana, Kharavela Nagar Abaas Yojana, Shanti Nagar Abaas Yojana, Saheed Nagar Abaas Yojana with 6000 number of EWS units and 1200 number of HIG / MIG units for cross subsidisation. VGF @ Rs. 2.5 Lakh is expected to be quoted. For meeting the same Rs. 1 lakh will be paid from PMAY and Rs. 1.5 lakh beneficiary contribution.

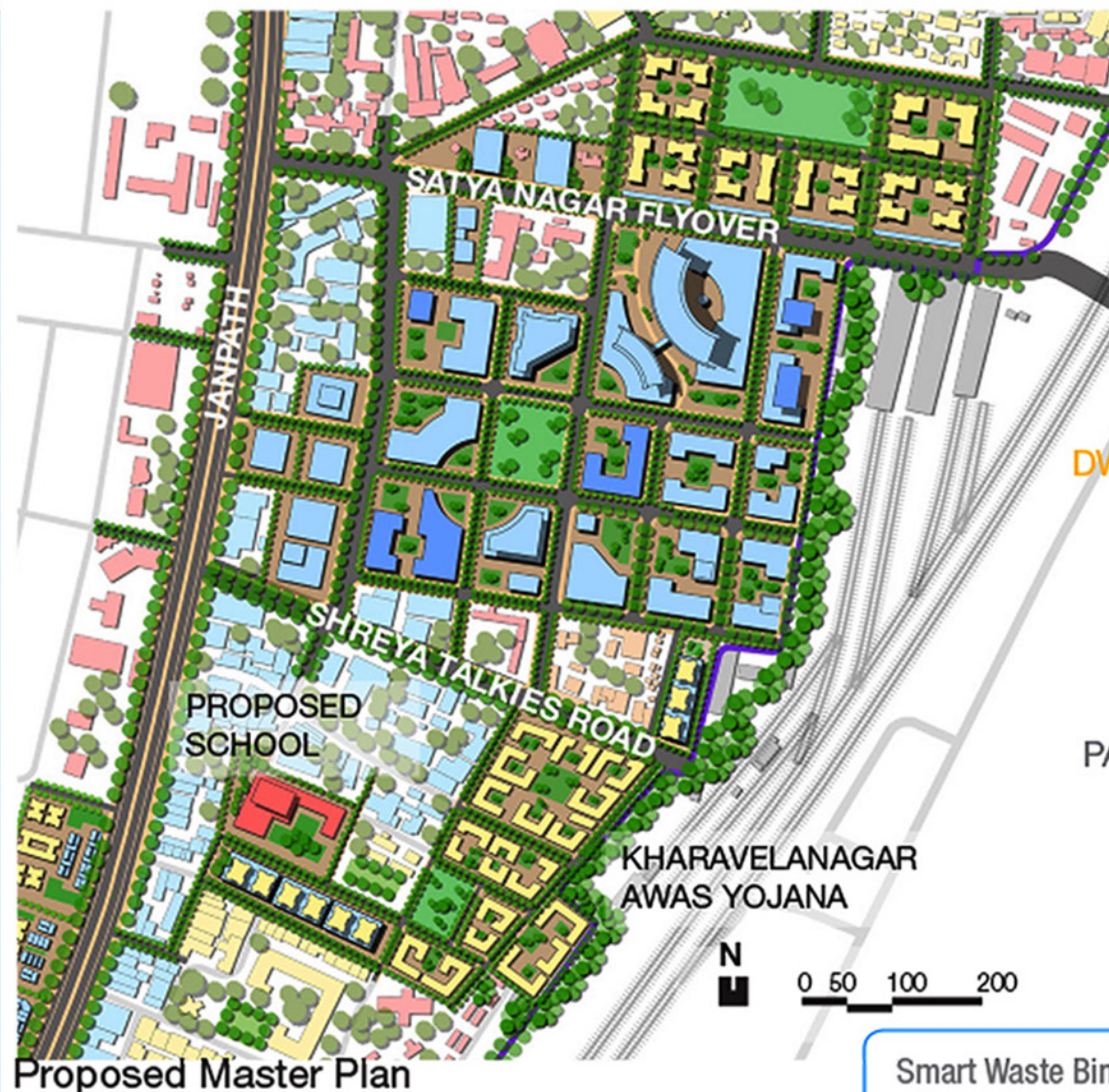
STRATEGIC PLAN- New Urbanism in Action

Building on the City Profile, SWOT analysis and Citizen Engagement, Bhubaneswar's Strategic Plan focuses on 5 strategic pillars guided by 10 Strategic Directions which are the key strategies for the plan supported by 30 City Goals.



SATYA NAGAR INSTIUTIONAL CORE

40 Acres of institutional space promoting commerce, education and business



Proposed Master Plan


13,850
EMPLOYMENT


3,015
POPULATION


670
DWELLING UNITS


10.6 Lakh Sq.ft
OFFICE SPACE


500 ECS
PARKING SPACE


2.2 Lakh Sq.ft
RETAIL SPACE


8.5 Lakh Sq.ft
HOTEL+CONVENTION

KEY COMPONENTS

Smart Waste Bins | Non Vehicle Zones | Mixed-use Multilevel
Car Parking | Integrated Housing Societies | Street Vendor's
Market | High End Hotels | Office and Commercial Space

RAILWAY STATION MULTIMODAL HUB

12 Acres of TOD mixed-use project including Railway Station terminal building redevelopment


5400
EMPLOYMENT


2,385
POPULATION

80% STREET LIGHT  SOLAR CANOPY with NET METERING
RAIN WATER HARVESTING
WASTE RECYCLING STATIONS
80% RECHARGE

4000 SQFT.  DEDICATED STREET VENDING ZONES
2.22 LAKH SQFT.  PEDESTRIAN TRANSIT PLAZA + CULTURAL HUB

1800 ECS  SHARED PARKING + REALTIME TRACKING
5000 SQFT.  NIGHT SHELTER


530
DWELLING UNITS


1.1 Lakh Sq.ft
OFFICE SPACE

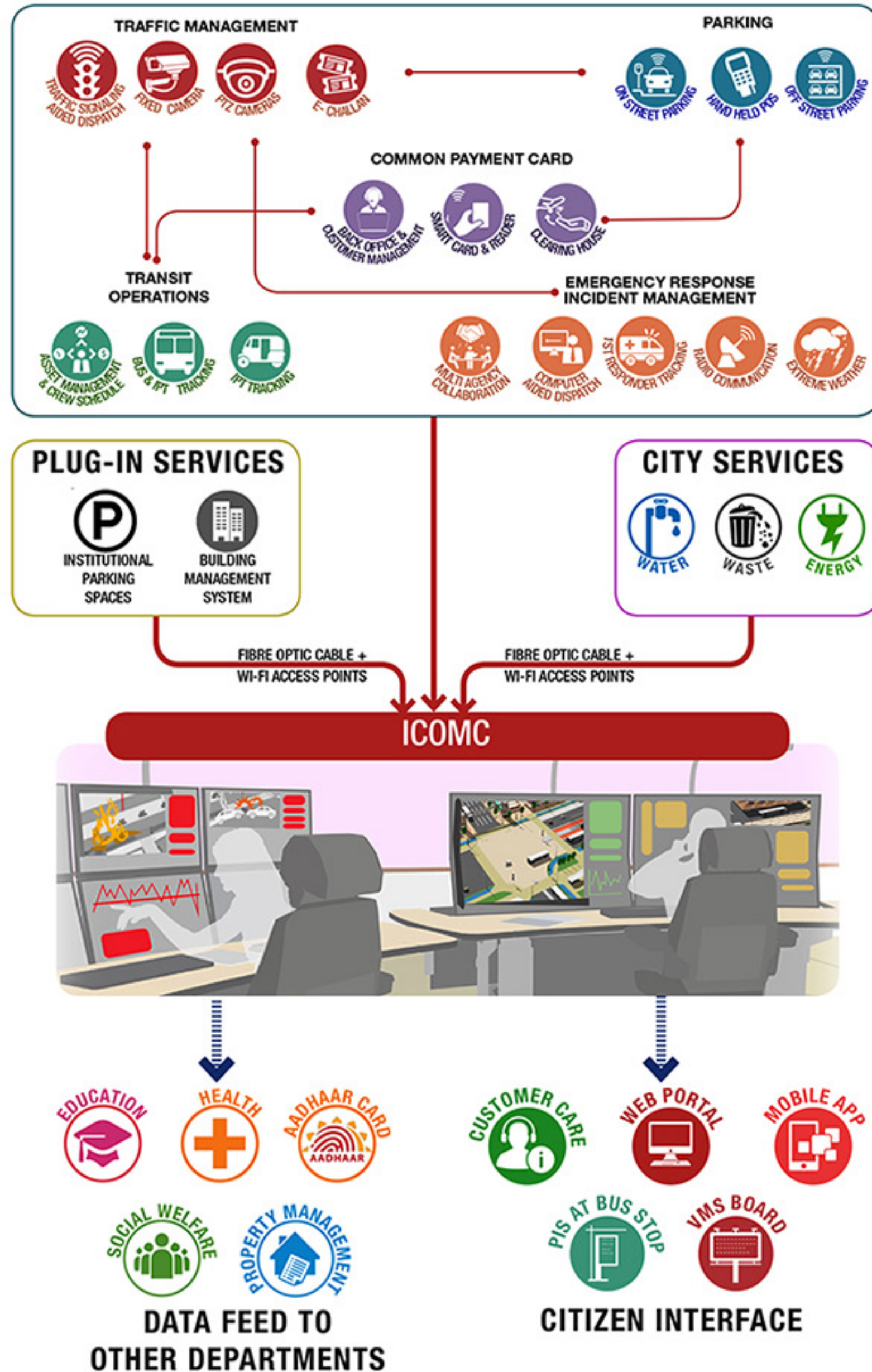

1,750 ECS
PARKING SPACE


7 Lakh Sq.ft
RETAIL SPACE


4.2 Lakh Sq.ft
HOTEL+CONVENTION



PAN CITY PROPOSAL- ICOMC ARCHITECTURE



Intelligent City Operations and Management Centre (ICOMC)

Bhubaneswar's state-of-the-art Intelligent City Operations and Management Centre (ICOMC) is at the core of its pan-city proposal. This centre will provide digital platform for integrating multiple city sub-systems.

INTELLIGENT TRAFFIC MANAGEMENT:



TRANSIT OPERATIONS:



PARKING MANAGEMENT:



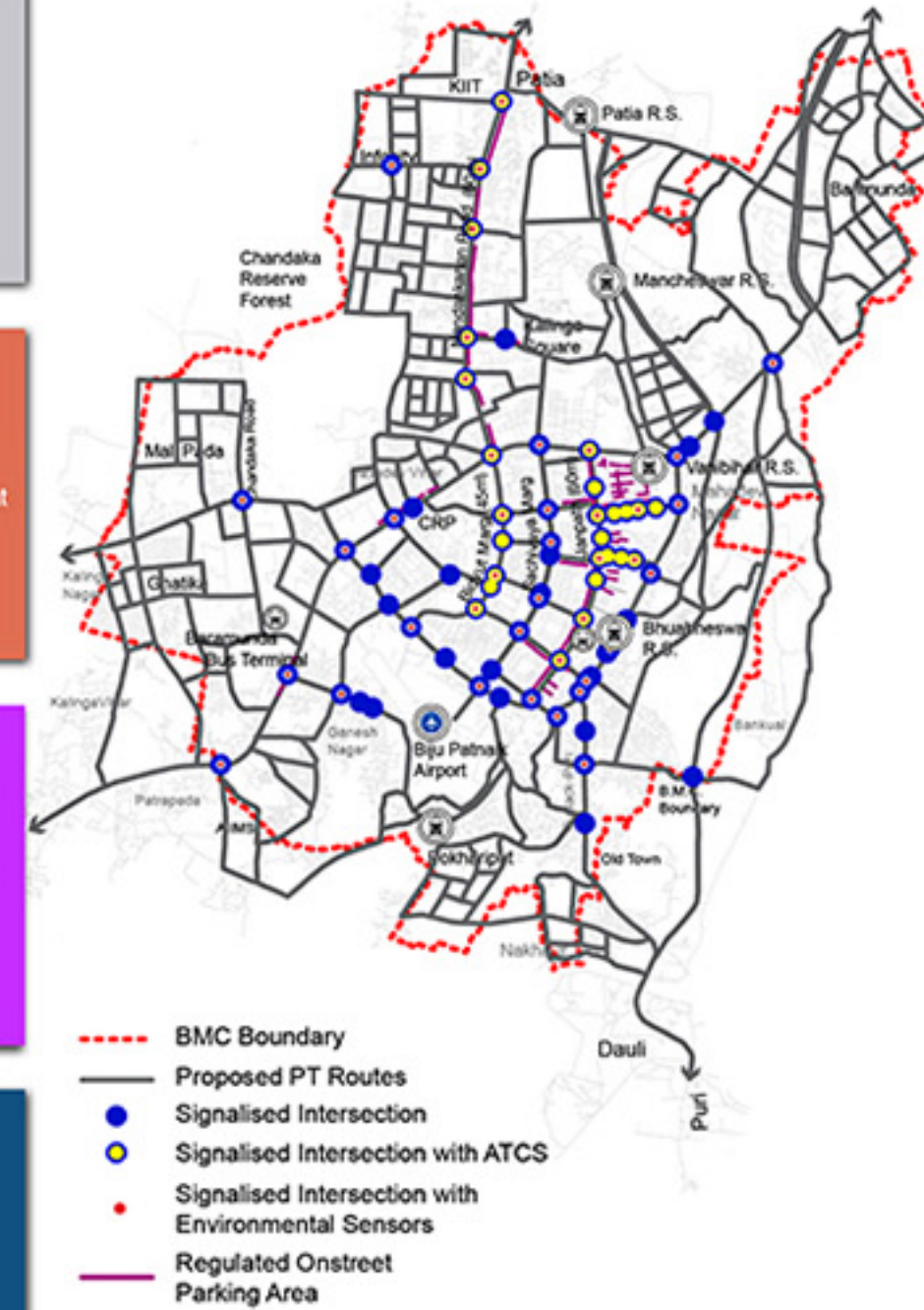
EMERGENCY RESPONSE AND INCIDENT MANAGEMENT:



COMMON PAYMENTS CARDS:



COMMAND CONTROL CENTRE:



24x7 Service Delivery

Evidence based decision making and responsive operational control for real-time incident management ; Inter-agency and inter-sectoral collaboration; Service delivery improvements

ICOMC will result in safe mobility, responsive city operations and management along with optimisation of capital expenditures by providing real time data support.

Customer Management Systems: Call Centre | Citizen Portal | Mobile App



BHUBANESWAR CITIZEN'S CONNECT INITIATIVE

With a goal to ensure meaningful and diverse participation in the Smart City Proposal preparation process, Bhubaneswar launched a multi-pronged initiative- **Citizen's Connect Initiative**- to obtain input from its citizens.



Likes: **86,851**
Reach: **3.4cr**
Engagement: **11lakh**

OFFLINE **ONLINE**

19.7lakh: Votes
1.6lakh: Suggestions
3.1lakh: Participation



KEY AUDIENCE SEGMENT

Media
Persons
NGOs
City Makers
Transgenders
Slum Dwellers

Elected
Representatives
Institutional
Stakeholders
City Staff

Women
Youth and
Children
Senior Citizens
Specially-abled

ENGAGEMENT STRATEGY *(Adapted IAP2's Public Participation Spectrum)*

INFORM



Provide citizens and stakeholders with objective information.

TOOLS

Print Media
Advertisements | Street Hoardings

Electronic Media
SMSs | Mass Mailer | Radio Talks |
Advertisements | Facebook | Website

Launch Program-
CITIZEN'S CONNECT

CONSULT



Obtain feedback from citizens on main challenges faced and discuss proposed solutions.

TOOLS

Conferences
Seminars | Techno Fair | Stakeholder Meetings

Whatsapp Groups
Focused Groups | Experts Inputs

INVOLVE



Conduct participatory planning exercises to co-create solutions.

TOOLS

Contest
Vision Statement | Logo Design | Photography

Discussions
Discussion Forums | Idea Box | Community Mapping

COLLABORATE



Partner with individuals, formal and informal groups to generate ownership in implementation.

TOOLS

Smart City Labs
Institutions | Colleges | Schools | Public Organizations | Community Labs- Slums

Champions
Volunteer program | Mayor's Badge | Smart Labs Execution Team (SET) | Smart Labs Organizing Team (SOT) Smart Toolkit

EMPOWER



To place final decision making in public hands through ballots and citizen juries.

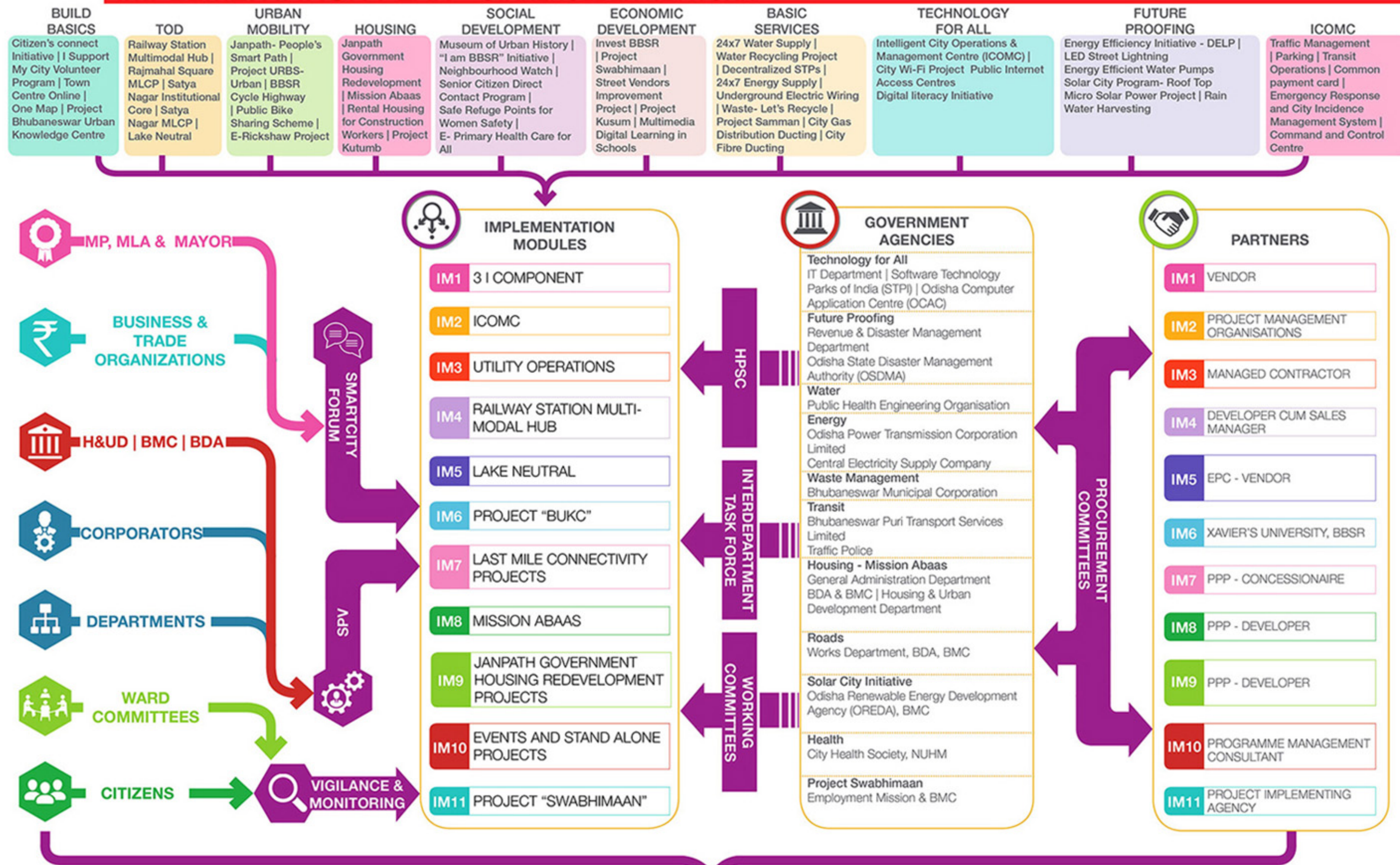
TOOLS

Democracy at work
Ward Sabhas | Corporation Approvals

Polling
Citywide Solution | Area-based Development | Best Practices for Transport and Waste

Progress Through Partnership
Technology Partners | College & Universities | NGOs | Technical partners

IMPLEMENTATION PLAN - STAKEHOLDER NETWORK



MAPPING ESSENTIAL FEATURES FOR BTCD

As a signature intervention reflecting the city's image, the plan proposes 50 projects in total to achieve all the essential features as given in Mission.

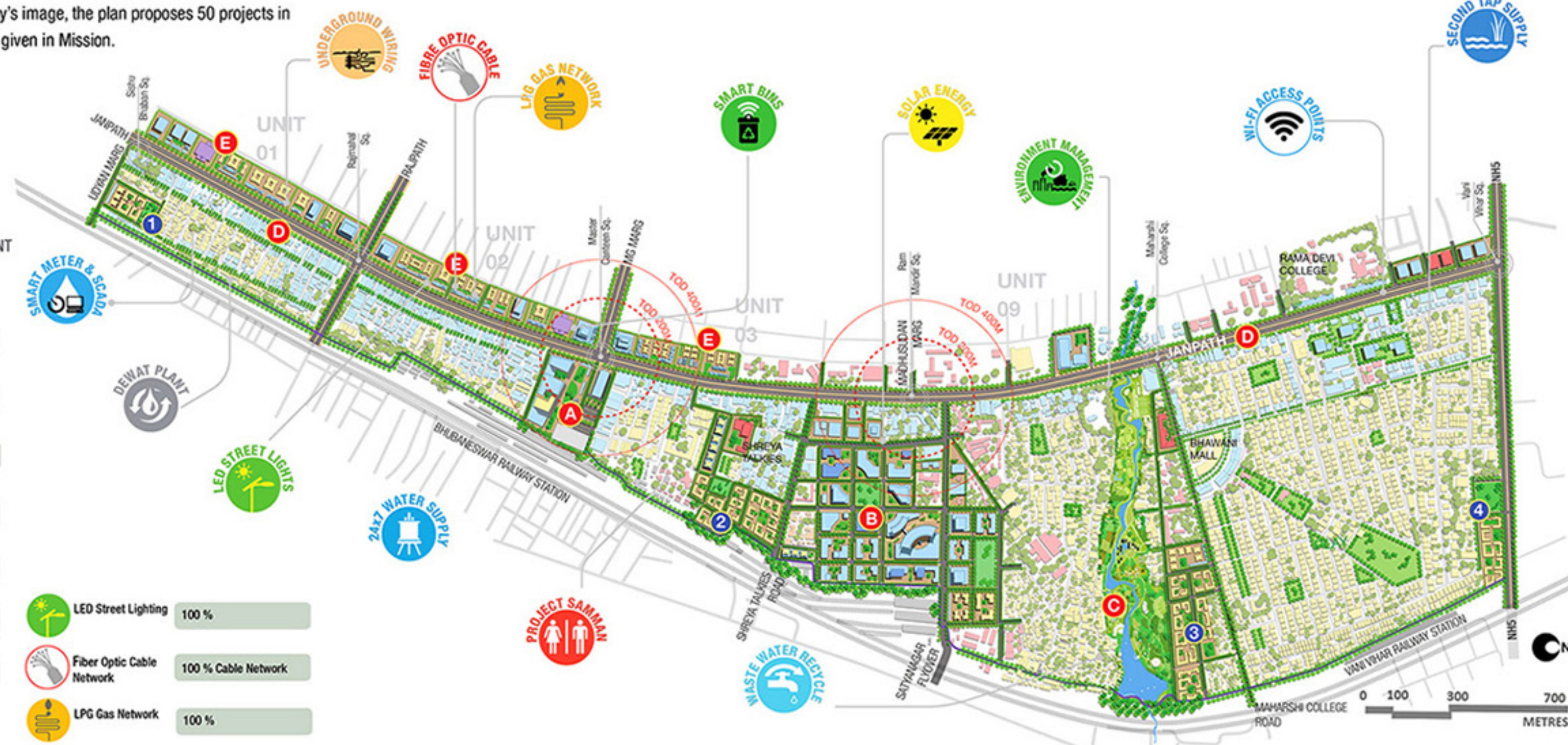
KEY PROJECTS

- A** RAILWAY STATION MULTIMODAL HUB
- B** SATYANAGAR INSTITUTIONAL CORE
- C** LAKE NEUTRAL
- D** JANPATH – PEOPLE'S SMART PATH
- E** JANPATH GOVT. HOUSING REDEVELOPMENT PROJECT

BASIC SERVICES

	Smart Electric Meter & SCADA	24956 (100% HHs)
	Solar Energy Generation	12.1 MW
	Smart Bins for Collection Efficiency	200
	Smart Water Meter & SCADA	24956 (100% HHs)
	Clear Water from Waste Water	9.3 MLD Clear Water
	Retention Pond for Second Tap Supply	180 MLD
	Decentralized Sewage Treatment	10.5 MLD
	Project Samman	5000 Beneficiaries/day

	LED Street Lighting	100 %
	Fiber Optic Cable Network	100 % Cable Network
	LPG Gas Network	100 %



VISIBLE IMPROVEMENT



VISIBLE IMPROVEMENT



NON-VEHICLE STREETS/ZONES



PEDESTRIAN FRIENDLY PATHWAYS



ENCOURAGEMENT TO NMT TRANSPORT



SAFETY OF CITIZENS ESPECIALLY CHILDREN, WOMEN AND ELDERLY

