





---

# The new currency is time.

---

The city is changing how we think about community. In today's world of choice, technology is blurring the lines of where we live, work, and play. At the forefront of technology-driven design, IBI Group is creating a new urban experience.

---






---

# Our vision is to create communities that are resilient and connected.

---

We don't simply update the aesthetic of an urban space; we help facilitate change that delivers measurable benefits.

A healthy community is one that responds to change.

We believe cities must be designed with intelligent systems, sustainable buildings, efficient infrastructure, and a human touch.

---





We foster diverse urban experiences with technology-driven design.



#### DESIGNING LIFESTYLE CHOICES

We live in a fluid world. What was once deemed suburban in the 20<sup>th</sup> century is now becoming part of the urban fabric. City planning involves an intimate understanding of how to create choice for urban dwellers.



#### CREATING RESILIENT COMMUNITIES

In an industry where new technologies are constantly arising, the resilient community will be comprised of flexible spaces that can adapt to new, innovative concepts, and shifting demographics.



#### ENRICHING QUALITY OF LIFE

We believe in design and technology's ability to increase quality of life. Today's spaces should encourage exploration, and open paths to communication and discovery. We design urban centres to create spontaneous encounters within common spaces.





# At IBI, we bridge the gap between design and technology.

From 'Fitbits' to machine learning, technology is changing how we engage with the built environment and think about living in the digital age.

## **WHAT'S THE + IN LIVING+?**

We are living in the age of intelligent processes and artificial neural networks. Designing for a future that is connected, IBI's intelligence practice focuses on creating tangible solutions for Smart Cities.

By utilizing data already available in our city systems, IBI connects the grid to a building. Moreover, we work to connect the assets within the building to people. With an expert knowledge of predictive analytics, Software as a Service (SaaS), and information exchange, we embed solutions into our designs in order to create better urban experiences.





# Design is now data-driven.

As design thinkers, architects and planners have always engaged in evidence-based design when creating new spaces.

At IBI Group, we believe in focusing not just on design, but on technology as well. For over 40 years, our intelligence practice has created solutions that work for cities. From software solutions to new products, we believe in bringing systems thinking to the forefront of design in order to make more informed decisions. We know that predictive models of behavioural data will allow us to design for good and practical experiences throughout the lifecycle of a home, a hotel, or any space.





---

Great design impacts  
quality of life.

---





## Mixed-Use: Creating Diverse Environments

Properly conceived, strategically placed, mixed-use developments can serve as catalysts of responsive change. Cities today are expertly combining seemingly disparate uses such as 'big box food stores' and high-rise urban residential units into single developments. Hotels, office spaces, retail centres, and residential spaces are blurring boundaries to create true urban centres that promote growth and vibrancy.









BURRARD PLACE VANCOUVER, BC, CANADA GREEN PROJECT

Architect: IBI Group Architects Canada Inc. (formerly IBI/HB Architects), Tower Architect: (Office Architect) Architectural Partnership; Rendering by DG Works



L'AVENUE MONTREAL, QC, CANADA AWARD WINNER





Carina and Callisto (formerly Hancock Tucker Eng + Wright Architects) Photo by Colin Jewell  
Carina and Callisto (formerly Hancock Tucker Eng + Wright Architects) Photo by Colin Jewell  
Carina and Callisto (formerly Hancock Tucker Eng + Wright Architects) Photo by Colin Jewell



## Townhomes: Creating a Sense of Community in Urban Life

As cities mature, townhomes increasingly represent an optimal form of residential accommodation for people who want a relationship with grade and immediate access to a private yard, and the community.



## Adaptive Re-Use: Looking After the Heartbeat of a City

The true test of good design is being able to re-use and adapt historic and landmark buildings. With today's rapid growth, being able to transform facilities and maintain their historical integrity, all while filling a need of a local community, illustrates the resilience of a city.







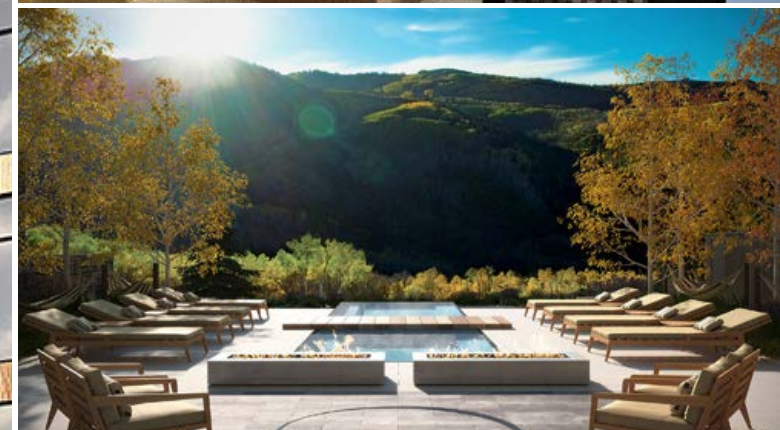
## Mid-rise: Animating the City

Once a predominant building type within North American cities, the benefits of mid-rise development is being recognized again by city planners. IBI understands that mid-rise residential development is key to bringing more variety and pedestrian-friendliness to cities.



LANDSEA AVORA WEEHAWKEN, NJ, USA







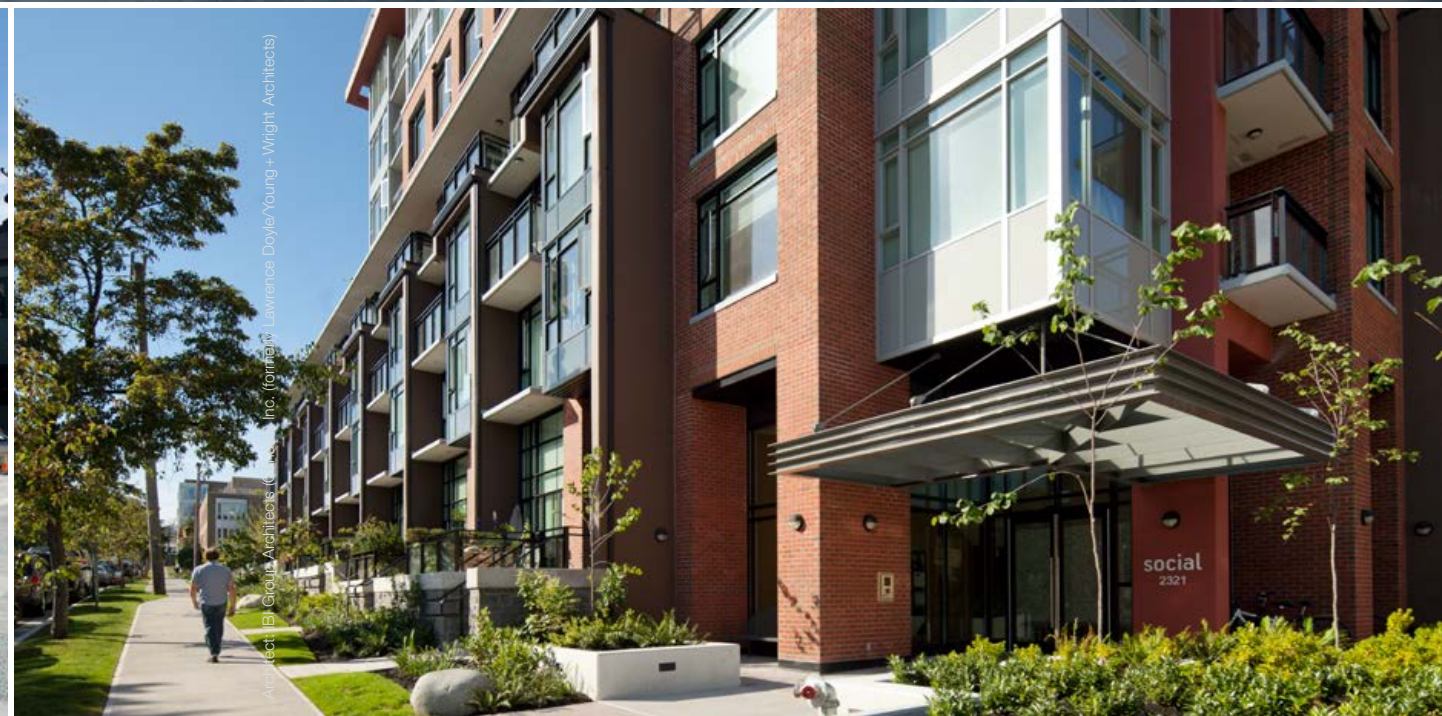
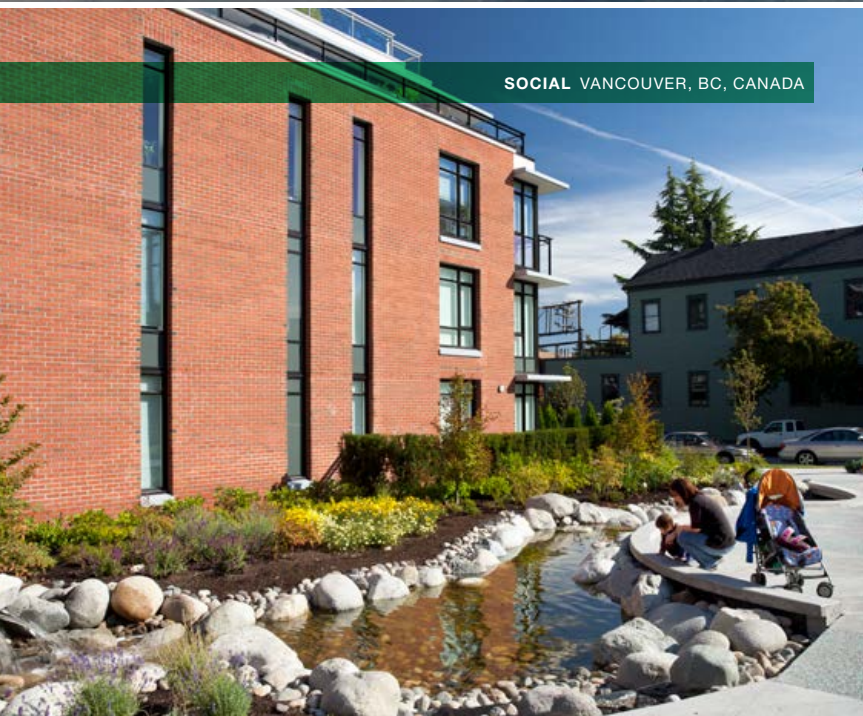




THE SHORES OAKVILLE, ON, CANADA



SOCIAL VANCOUVER, BC, CANADA







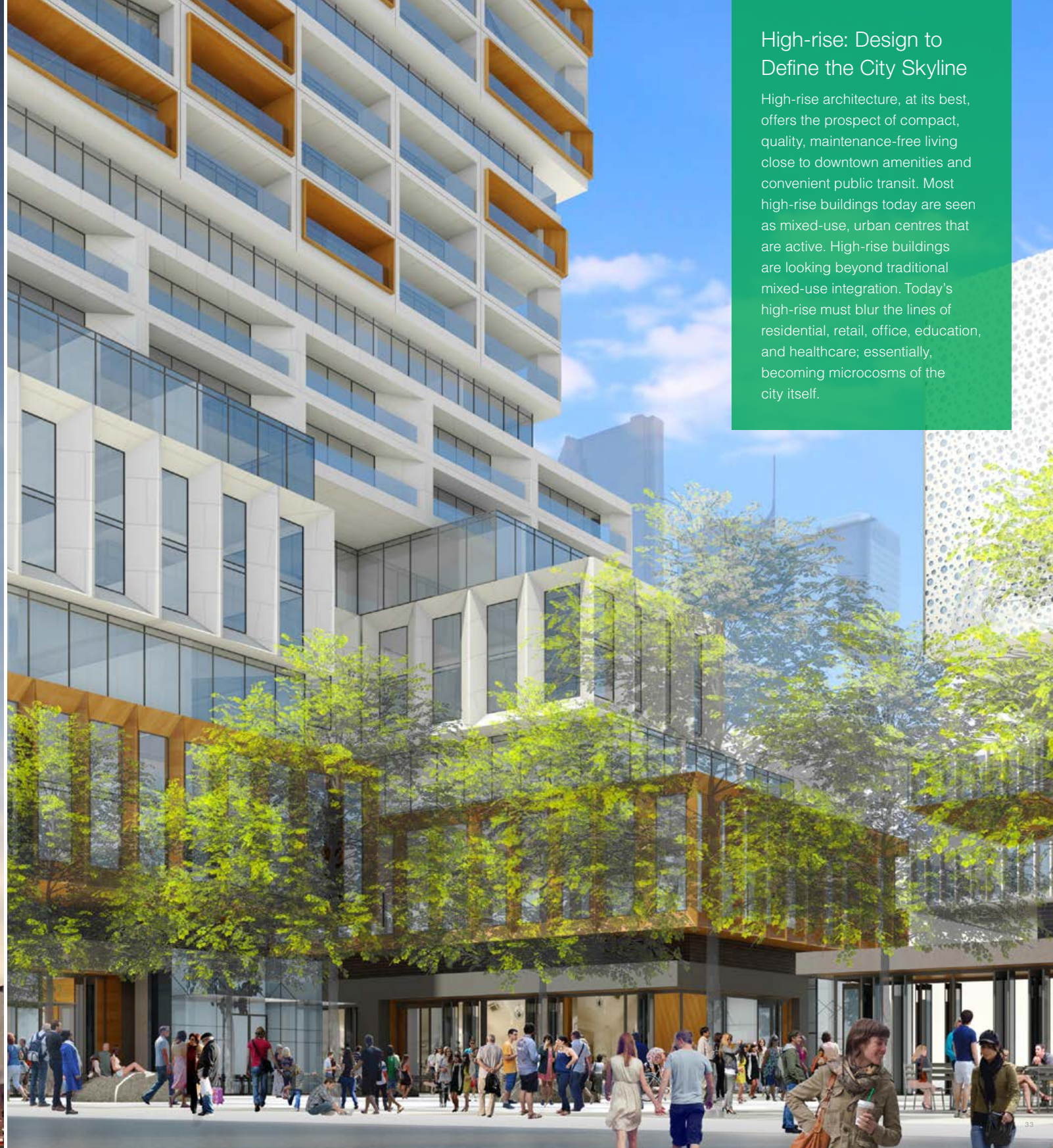
Architect: IBI Group Architects (Canada) Inc. (formerly IBI/HB Architects)



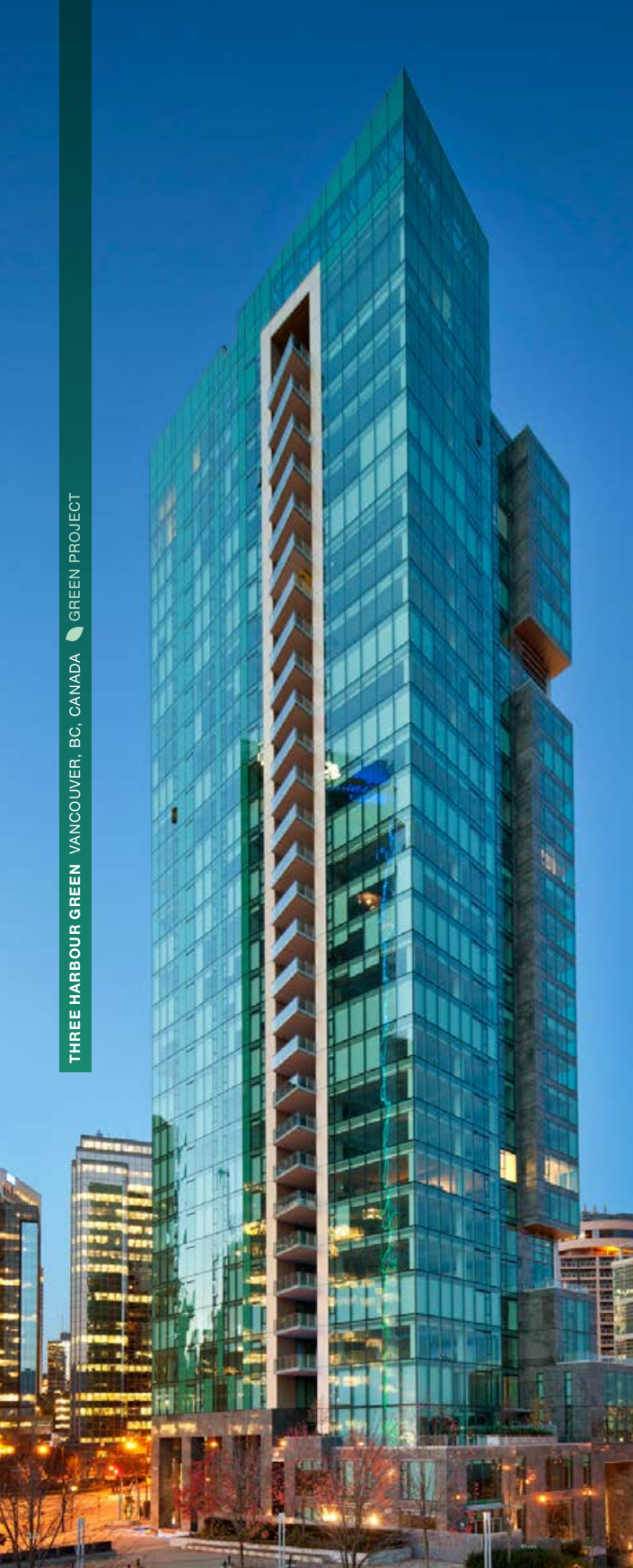


## High-rise: Design to Define the City Skyline

High-rise architecture, at its best, offers the prospect of compact, quality, maintenance-free living close to downtown amenities and convenient public transit. Most high-rise buildings today are seen as mixed-use, urban centres that are active. High-rise buildings are looking beyond traditional mixed-use integration. Today's high-rise must blur the lines of residential, retail, office, education, and healthcare; essentially, becoming microcosms of the city itself.







DELTA HOTEL TORONTO, ON, CANADA AWARD WINNER



Project Lead:  
Architect: B|G Group Architects (Canada) Inc. (formerly B|H Architects) Photo by Bob Matheson





RITZ CARLTON HOTEL AND RESIDENCES TORONTO, ON, CANADA



CORE CONDOS TORONTO, ON, CANADA



THE MET TORONTO, ON, CANADA






TANGO 2 – GYM TORONTO, ON, CANADA



ALI ASKER – GAMES ROOM BANGALORE, INDIA



A man in a light blue striped shirt and dark jeans walks from left to right. A woman in a black long-sleeved shirt and black pants walks behind him, carrying a black shoulder bag and a white coffee cup. They are walking on a paved path in a modern urban park with wooden benches and trees. A green semi-transparent box is overlaid on the right side of the image, containing white text.

---

# We believe communities that thrive are affordable, mobile, and inclusive.

---

## **AN AFFORDABLE FUTURE**

With the increase in urbanization, diverse and affordable living options are crucial to the sustainable development of cities. Good city-making involves planning for the future in a way that is affordable and accessible.

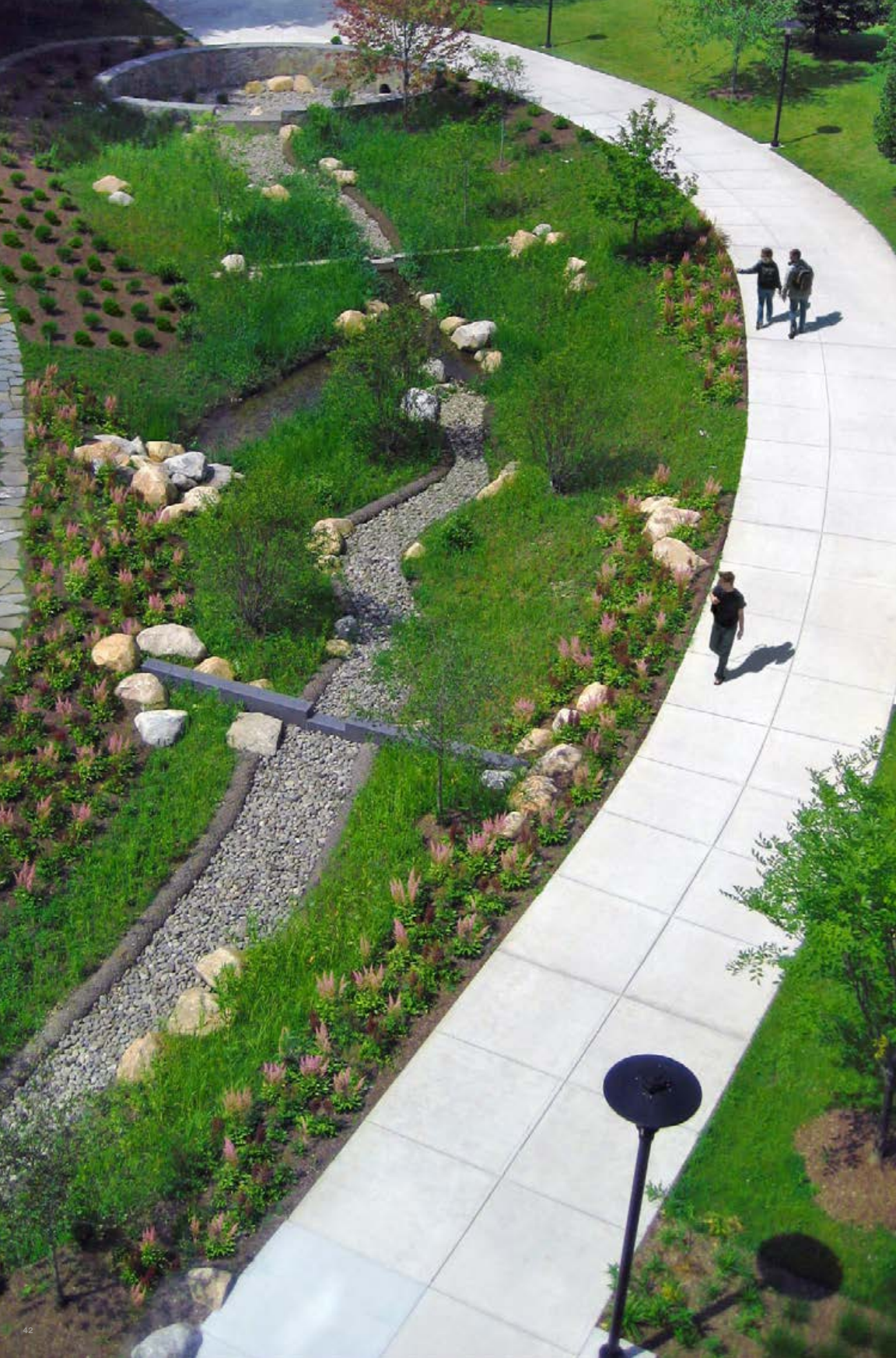
## **FREEDOM TO MOVE: THE MOBILITY REVOLUTION**

A great city is known for having multiple options in mobility. Connection to transit, bike-shares, and car-shares has placed a high level of importance on the freedom of choice for urban dwellers that was not seen a decade ago. We're moving beyond the car culture of the 20<sup>th</sup> century, and into a new area of consumer choice. Creating livable places that connect people to the city in multiple ways is at the heart of good city planning.

## **THE INCLUSIVE CITY**

Cities strive to be diverse hubs of creativity and innovation, but they also must focus on inclusivity. The days of retiring in a separate home away from city life are coming to an end. Thriving adults entering into their golden years want to be a part of the urban fabric. We understand this shift, and believe that the city of the future is one that is truly intergenerational and inclusive, allowing people to age in place.





# Technology has accelerated the pace at which change occurs.

Smart design must adapt to unpredictable disruption in a demand-driven, sharing-based economy. At IBI Group, we're looking at this disruption in a holistic way; embracing the unknown and allowing data to help drive our decisions forward.

## THE SHARED ECONOMY: CHANGING HOW WE LIVE, MOVE, AND PLAY

Mobile technology has leveled the playing field for individuals to participate in rental markets of expensive goods and services (cars, housing, music, staffing) previously dominated by large companies. New mobility services have reduced the need for parking structures. With housing costs up, many people are sharing part of their home through services like Airbnb. People are looking for full experiences with their products and services – experiences that are convenient, interactive, varied, personalized, and fun. IBI understands the sharing economy and is adapting to a new way of design in order to drive change across the city.

## THE ACTIVE THIRD AGE: CREATING CITIES THAT ENABLE ALL AGES TO THRIVE

By 2050, studies show that over 25% of the world's population will be over the age of 65. The population is ageing, living longer, and expects better services. How do we create healthier, smarter, and more mobile cities? We're designing a future that enables all ages to thrive. Through projects such as our Healthy New Towns work with the National Health Society (NHS) in the UK, IBI is blurring the lines of living and healthcare to create healthy neighbourhoods. In our recent competition with the American Association of Retired Persons (AARP), IBI prototyped a new type of home that allows people to age in place.





# Invested in Innovation

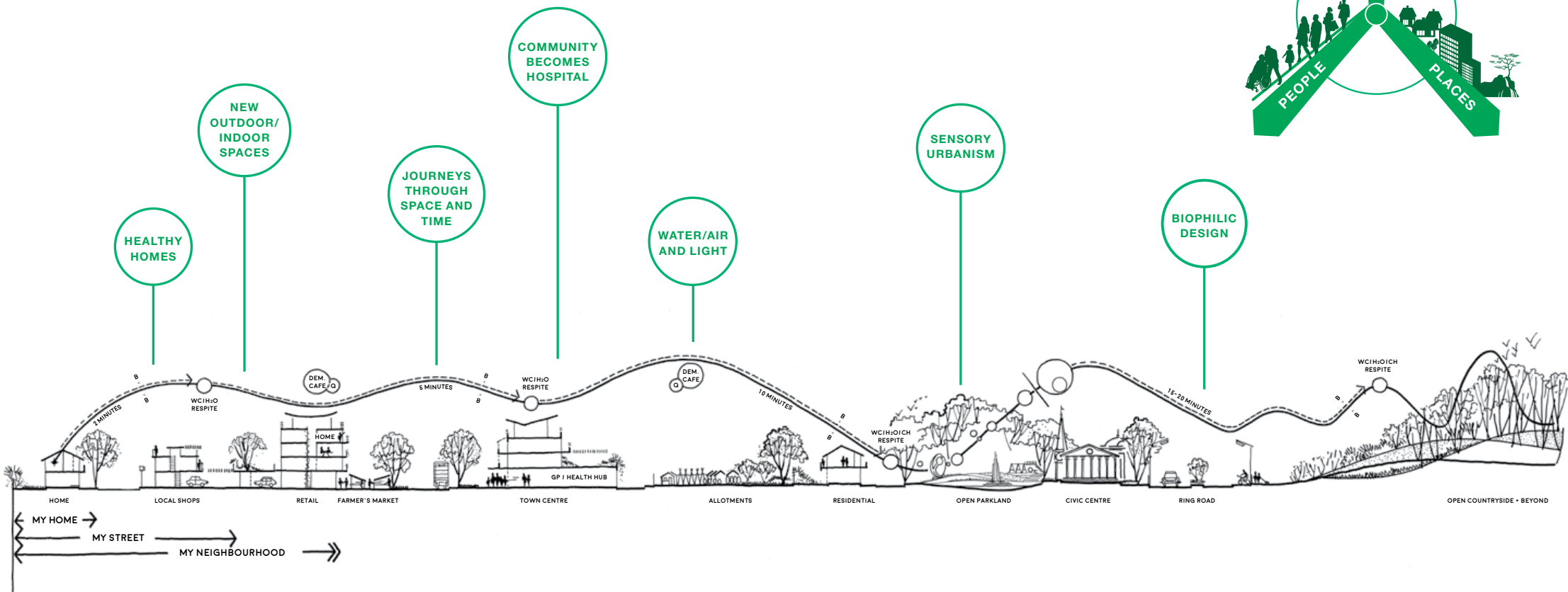
IBI THINK is responsible for encouraging, capturing, and developing the intellectual capital vested in IBI Group's projects, people, and processes.

Infusing analytics and evidence-based design into every project, our team is working to shape the future of cities in a way that is progressive and adaptable.



# Healthy New Towns – In our work with the NHS in the UK, IBI Group is working to redefine a “healthy new town.”

Designing and planning ‘wellness’ in new communities is a complex and intricate exercise. Visual-centred thinking still overwhelmingly dominates the practice of today’s architectural design and urban planning. However, we experience our environments in a multi-sensory way; it’s a complex system of perception, memory, and consciousness. Architects, landscape designers, and master planners must acknowledge and address all sensory factors from the earliest stages of the design process in order to fully create an environment that is healthy.





The image is a full-page architectural rendering of a futuristic, multi-story building. The central feature is a large, transparent glass dome that houses a lush, green interior garden with various trees and plants. The building's facade is composed of numerous balconies and terraces, some of which are integrated with green walls and plants. The balconies are arranged in a staggered, overlapping manner, creating a dynamic and layered appearance. The building is set against a clear blue sky, and the overall design suggests a focus on sustainability and urban living.

## Industry Advancements by IBI Living+

### HEALTH HAUS

Health Haus is a research and development piece by IBI that seeks to examine how evidence-based design housing solutions can support wellbeing, and play a pivotal role in supporting sustainable healthcare systems. Assembling a home from pre-fabricated components, Health Haus is a concept that harnesses new, technological developments, and positive governmental initiatives. Seeking to provide cultivable gardens, access to natural light and ventilation, the Health Haus is a sustainable home that promotes healthy living.

### URBAN WELLBEING

IBI's newest concept for urban wellbeing examines how urban development can help support housing delivery and the future sustainability of healthcare systems. Through an urban, mixed-use, multi-generational development, the community concept promotes wellbeing in a holistic manner. The concept supports a community that is active, sustained, independent, and supported.

### RE-DEFINING HOME: HOME TODAY, HOME TOMORROW

With the senior population quickly increasing, creating sustainable and innovative living communities that can enable aging-in-place has become one of the main focuses for designers today. At IBI, we recognize this shift happening across our cities.

In a recent challenge, three of our architects participated in designing a home that can grow with a family as they age, and won first place for their design concept. The home had to be affordable, feasible, and aesthetically-pleasing. The home is the crucible of our identity, and the aging-in-place approach allows us to retain dignity and independence throughout our lifetimes.



---

# ‘Smart Cities’ are already a reality.

---

IBI is using the grid to inform design. We recognize that the future of our cities is in harnessing the data we create every day to make responsible choices for our world.

The development of healthier, more empowered communities within a smart city creates a better work/life balance, with more options for lifestyle choices.

The Smart City model offers a way to improve the quality of city life through the incorporation of technology and intelligent systems into the design of both the physical and human infrastructure.

Drawing on our expertise in development, architecture, urban planning, transportation, and intelligent systems software, we are ideally placed to take a leading role in the planning and delivery of the Smart Cities and healthy communities of tomorrow.







IBI Living+ is a centre of excellence within IBI Group focused on fostering urban experiences with technology-driven design.

IBI Group is a global team of dedicated and experienced architects, engineers, planners, designers, and technology professionals who share a common desire – to help our clients create livable, sustainable, and advanced urban environments.

IBI has over 60 offices located in major urban centres within North America, the Caribbean, Europe, Middle East, and Asia.

#### SECTORS

##### INTELLIGENCE

SOFTWARE  
SYSTEMS DESIGN  
SYSTEMS INTEGRATION

##### BUILDINGS

ARCHITECTURE  
INTERIOR DESIGN  
MECHANICAL, STRUCTURAL, AND ELECTRICAL ENGINEERING

##### INFRASTRUCTURE

CIVIL ENGINEERING  
LANDSCAPE ARCHITECTURE  
PLANNING  
TRANSPORTATION  
URBAN DESIGN



